









WELCOME!



Vicky Rowinski

**Director
Macomb County Planning
& Economic Development**

AGENDA

-  **9:00 - 9:30 a.m.**
Welcome & Purpose of the Day
-  **9:30 - 10:00 a.m.**
The \$1 Billion Infrastructure Investment Portfolio (2026-2031)
-  **10:00 - 10:20 a.m.**
Army Corp of Engineer: Overview
-  **10:20 – 10:45 a.m.**
Take a Break
-  **10:45 – 11:05 a.m.**
DTMB: Overview
-  **11:05 – 11:25 a.m.**
Macomb County Department of Roads – William P. Rosso Road Project



AGENDA

- 11:25 – 11:45 a.m.
Macomb County Public Works – Irwin Tucker Drain Project
- 11:45 – 12:00 p.m.
APEX Accelerator: Empowering Businesses in Government Contracting
- 12 p.m.
Key Leader – Closing Comments
- 12:30 p.m.
Event Concludes





Colonel Bryan Amara

"Acting" Wing Commander
Selfridge ANGB, 127th Wing



Mark Hackel

Macomb County Executive



Major General Paul Rogers

Adjutant General
Michigan National Guard



Candice Miller

**Macomb County
Public Works Commissioner**



LtCol Steve Klenke

Base Civil Engineer
Selfridge ANGB, 127th Wing



The \$1 Billion Investment Selfridge Air National Guard Base

History/Background



Selfridge Field Hangars under construction

- How did we get here?
- What problems are we trying to solve?
- How does it all fit together?



Runway / Airfield



Clear Zone Background

- Clear Zone Requirements
- 1979 Compromise
- Recent Basing Actions (F-35 & Foreign Military Sales)

Key Issue

Residences currently exist within the South Clear Zone, creating a safety and operational conflict that must be resolved to meet DoD standards.



(SOUTH CLEAR ZONE - EXISTING & PROPOSED)

Runway Encroachment Solution

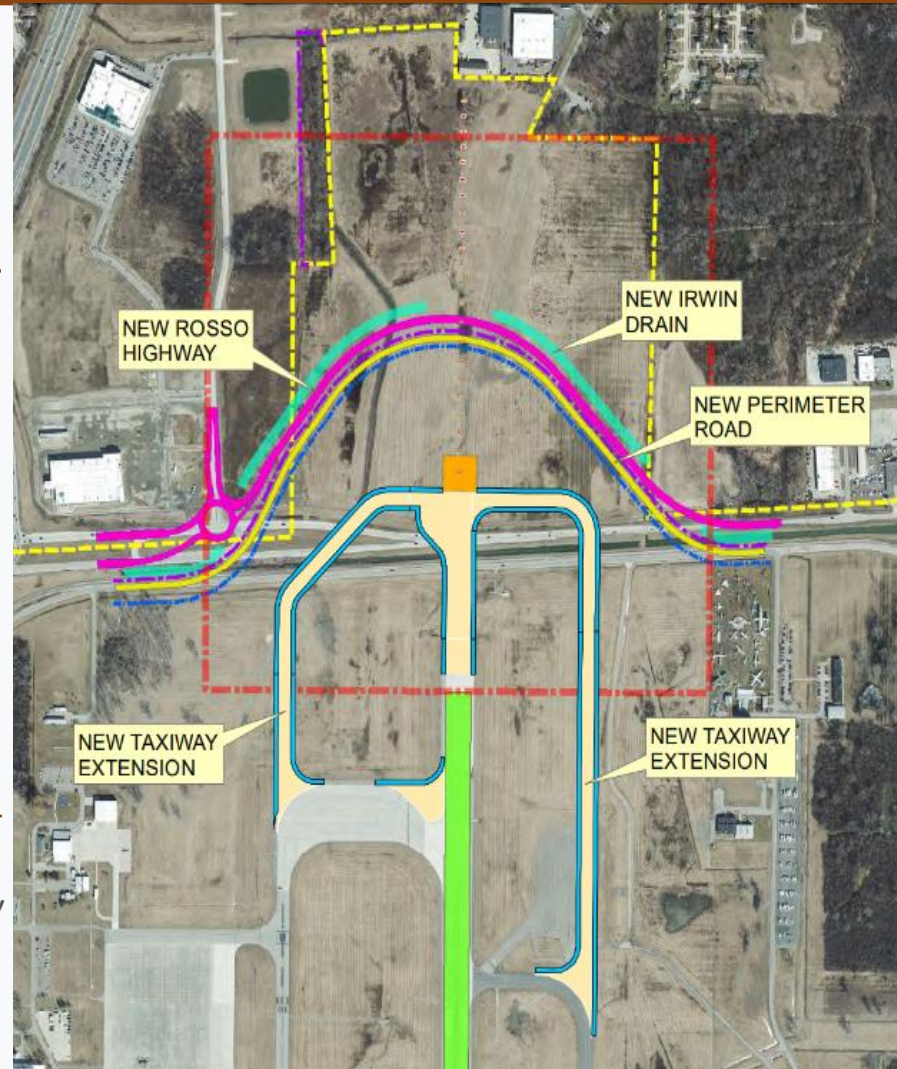
Problem: Encroachment

Solution: Shift South Clear Zone North

Scope

- Land Acquisition
- Realign Rosso Highway
- Realign Irwin Drain
- Extend Runway North
- Connect Taxiways
- Install Blast Deflector

Taxiway Alpha alternative as well as "no action" alternative are under consideration as required by the National Environmental Policy Act (NEPA)



KC-46 Pegasus

January 2024

Secretary of the Air Force Announcement

Current Facilities Inadequate

KC-46 Size/Mission Requirements



Per NEPA requirements: No final decision can be made until a Record of Decision (ROD) is signed – Estimated in Q2FY27



KC-46 Main Operating Base 8 Facilities



Problem: No facility on Selfridge can fit a KC-46

Solution: New Dual-Bay Hangar: 162K SF

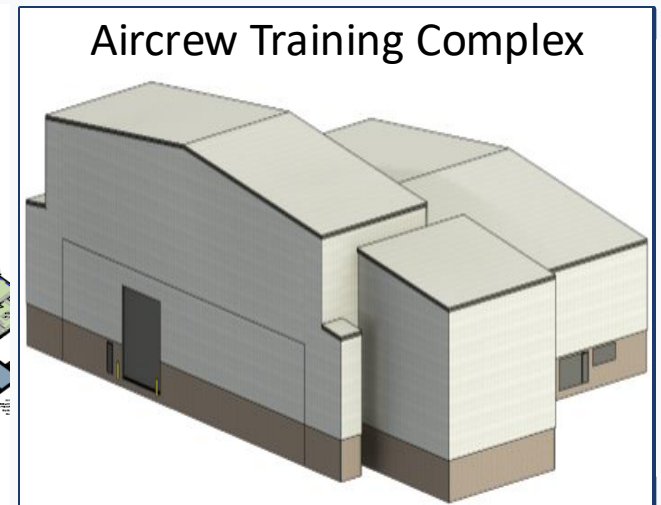
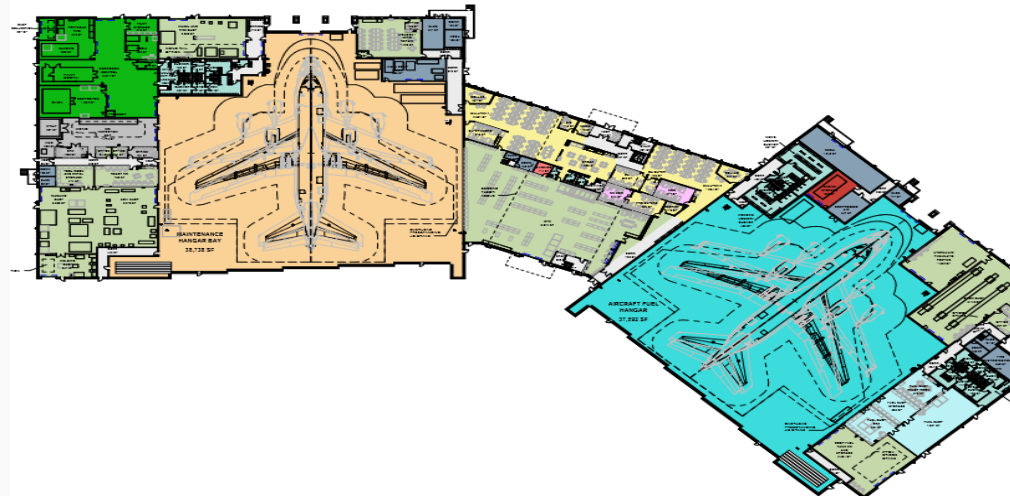
Problem: (3) Simulators are required

Solution: Renovate existing hangar for Aircrew Training Complex



Dual Bay Maintenance Complex

- Squadron Operations Building
- Aerospace Ground Equipment Shop
- Cargo Storage/Service Area
- Airfield Pavements



Aircrew Training Complex

F-15EX

President Trump visit to Selfridge on 29 April 2025

Announced (21) F-15EX aircraft coming to Selfridge

Problem: Antiquated hangars/facilities

Solution: New facilities

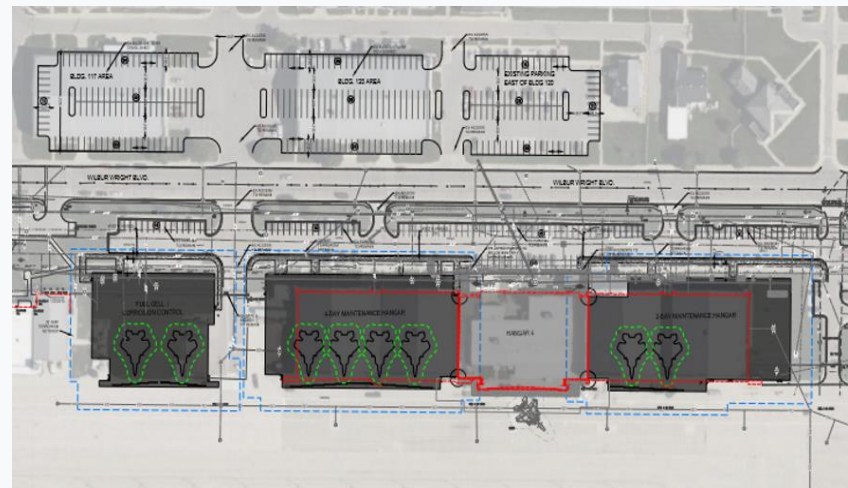


F-15EX Facilities



New F-15EX Hangar (121K SF)

- Eight covered parking spaces
 - Three independent structures
 - Significant demolition of current facilities
-
- Reuse Fuel Cell for Aerospace Ground Equipment (AGE) Shop
 - Renovate Squadron Operations Building
 - New Simulator Space



Infrastructure



Problem: Aging Infrastructure

Solution: Comprehensive utility/infrastructure plan

- Road Network
- Electrical Grid
- Water Distribution
- Sanitary Sewer
- Storm Water



The \$1 Billion Investment

Unified program spanning four critical initiatives
Interconnected projects to accomplish F-15EX and KC-46 – Mission Next



RUNWAY ENCROACHMENT

4

projects

Solution

Rosso Highway/Irwin Drain
Runway/Airfield
Taxiway Alpha
Taxiway Bravo

F-15EX

11

projects

Beddown

8-Bay Maintenance Complex
Squadron Operations
Aerospace Ground Equip. Shop
Munition Facilities
Temporary Facilities
Aircraft Arresting System

KC-46

7

projects

Beddown

Dual Bay Maintenance Complex
Aircrew Training Complex
Squadron Operations
Aerospace Support Equip. Shop
Cargo/Equipment Storage
Airfield Pavement

FOUNDATIONAL

9

projects

Infrastructure

Utility Study
Perimeter Road Repair
Electrical Feeders/Switch House
Sanitary Sewer System
Storm Water Distribution System
Demolition

LEGEND:

-  EXISTING TAXILINES
-  PROPOSED TAXILINES
-  PROPOSED FLIGHTLINE FENCE
-  DEMO
-  SRM
-  MILCON
-  PROPOSED PARKING / PAVEMENT
-  FUEL HYDRANTS
-  ADDITION



EAST RAMP



**F-15EX / KC-46 BEDDOWN
"SELFRIDGE ANG BASE"**





Jim Walters, PE, PMP
Air Force Reserve Support
Selection USACE

INDUSTRY DAY

KC46 DUAL BAY HANGAR
SELFRRIDGE AIR NATIONAL GUARD BASE, MI

Presenter:
Jim Walters, PE, PMP



U.S. ARMY



US Army Corps
of Engineers®

“The views, opinions and findings contained in this report are those of the author(s) and should not be construed as an official Department of the Army position, policy or decision, unless so designated by other official documentation.”



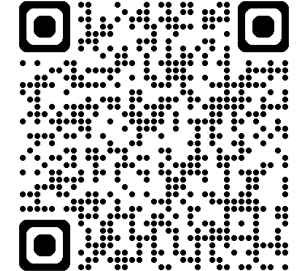
AGENDA

- USACE Louisville District Overview
- USACE Procurement Process Overview
- Small Business Briefing
- Overview of KC 46 Dual Bay Hangar Complex Project
- Upcoming projects in region
- Q&A Session



USACE LOUISVILLE DISTRICT OVERVIEW

- Missions
 - Interagency and International Support (IIS)
 - Military Programs
 - MILCON (IL, IN, KY, MI, OH)
 - Nationwide Army & Air Force Reserve Programs
 - Worldwide Energy Resilience & Conservation Investment Program (ERCIP)
 - Civil Works
 - Navigation
 - Flood Risk Management
 - Regulatory
 - Emergency Response
 - Recreation
 - Environmental Restoration
- Robust Program obligating ~\$1.1B (2,317 contract awards) in FY25. Anticipate executing ~\$1.5B in FY26.
- Construction & IDIQ Forecast is maintained on the Business With Us page of LRD website, <https://www.lrd.usace.army.mil/Business-With-Us/>.
- Contracting opportunities are posted to www.sam.gov. Search W912QR for LRL projects.





HOW TO OBTAIN THE SOLICITATION

- System for Award Management (SAM) at www.sam.gov and Procurement Integrated Enterprise Environment (PIEE), Solicitation Module at <https://piee.eb.mil/sol/xhtml/unauth/index.xhtml>
- Solicitation Numbers will begin with “W912QR”
- Interested vendors list
- Register to receive notifications and updates / amendments
- Best Value Tradeoff technical information will be posted on www.sam.gov



OBTAINING THE ISSUE DOCUMENTS

- Requirements to download Technical Data Package:
 - Need to be registered in System for Award Management (SAM) database. You must sign up and sign-in to your account to use many features of SAM.gov (saving searches, viewing solicitations, etc.)
 - You must register your business entity (you as an individual or your organization) to be able to propose on contracts or apply for federal assistance (grants, loans, etc.) from the federal government.
- Any amendments issued to the solicitation will also be posted on www.sam.gov
- Pre-Solicitation Notice – will be posted on www.sam.gov at least 15 days prior to the initial issuance of the Solicitation package
- Advertisement – 30-60 days to prepare proposals



THE PROCUREMENT PROCESS

- Contract will be Design-Bid-Build (D-B-B) Request for Proposal (RFP)
- Project award will be made on a “Best Value Trade-off” basis as described in the evaluation criteria.
- Proposals must be submitted on time.
 - **The Louisville District is located in the Eastern time zone.**
- The Source Selection Evaluation Board (SSEB) will evaluate contractors’ proposals based on specific factors which are defined in the RFP Package.



PROPOSAL REQUIREMENTS

- Source Selection Criteria for a “Best Value Trade-Off” typically consists of four factors:

Volume I:

- 1) Factor I - Past Performance Evaluation
- 2) Factor II – Risk Management Plan
- 3) Factor III - Schedule Narrative
- 4) Factor IV - Small Business Participation Plan

***Note these requirements are typical and subject to change as the DB RFP package is developed. The official Source Selection requirements will be clearly identified in the solicitation.**

Volume II:

Pro-Forma Evaluation

(Price, JV agreements, Bonding, Pre-Award Information, Subcontracting Plan, and Project Labor Agreement)

Submit your best proposal the 1st time. Discussions are only opened as necessary.



PROPOSAL REQUIREMENTS (cont.)

- Instructions for submitting a Request for Information (RFI) have been included in the Solicitation.
 - RFIs for this project will be received and answered through the ProjNet system.
 - Any RFIs submitted directly to the project team will not receive a response and will be directed to the ProjNet system.
 - This project's Projnet Bidder's Key will be included in the solicitation, which is used to post your RFIs to the proper project.



PROJECT LABOR AGREEMENT

- Given the anticipated \$ value of the project, we are required to include a Project Labor Agreement (required on projects which exceed \$35M).
- “Project labor agreement” means a pre-hire collective bargaining agreement with one or more labor organizations that establishes the terms and conditions of employment for a specific construction project and is an agreement described in [29 U.S.C. 158\(f\)](#).



PROJECT LABOR AGREEMENT (cont.)

22.504 General requirements for project labor agreements.

(a) *General.* Project labor agreements established under this subpart shall fully conform to all statutes, regulations, and Executive orders.

(b) *Requirements.* The project labor agreement shall—

(1) Bind all contractors and subcontractors engaged in construction on the construction project to comply with the project labor agreement;

(2) Allow all contractors and subcontractors to compete for contracts and subcontracts without regard to whether they are otherwise parties to collective bargaining agreements;

(3) Contain guarantees against strikes, lockouts, and similar job disruptions;

(4) Set forth effective, prompt, and mutually binding procedures for resolving labor disputes arising during the term of the project labor agreement;

(5) Provide other mechanisms for labor-management cooperation on matters of mutual interest and concern, including productivity, quality of work, safety, and health; and

(6) Include any additional requirements as the agency deems necessary to satisfy its needs.

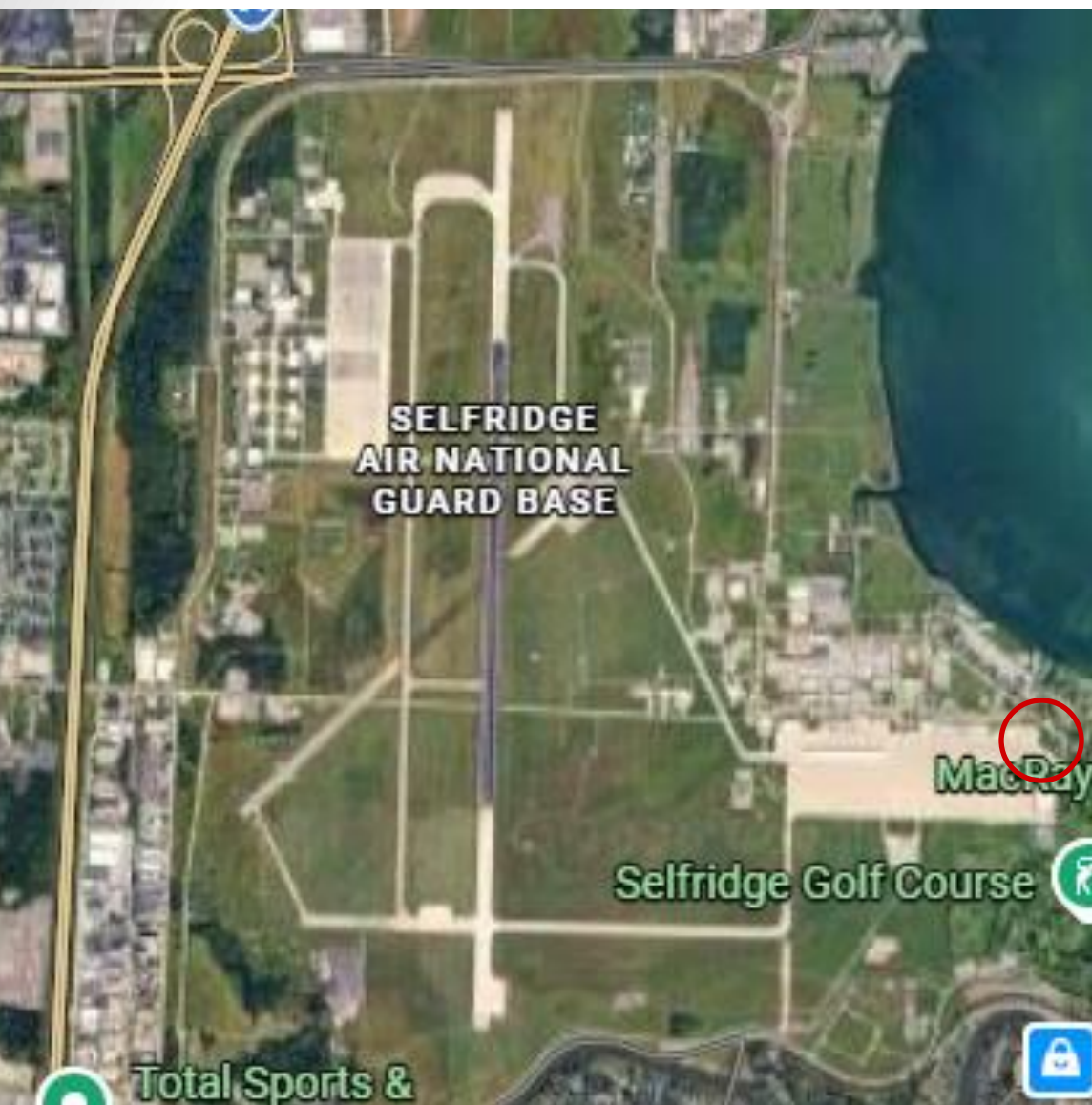
(c) *Terms and conditions.* As appropriate to advance economy and efficiency in the procurement, an agency may specify the terms and conditions of the project labor agreement in the solicitation and require the successful offeror to become a party to a project labor agreement containing these terms and conditions as a condition of receiving a contract award. An agency may seek the views of, confer with, and exchange information with prospective bidders and union representatives as part of the agency's effort to identify appropriate terms and conditions of a project labor agreement for a particular construction project and facilitate agreement on those terms and conditions.

https://www.acquisition.gov/sites/default/files/current/far/html/Subpart%2022_5Reserved.html



SMALL BUSINESS PARTICIPATION PLAN AND SUBCONTRACTING PLAN

- The Small Business Participation Plan is a rated evaluation factor in all unrestricted procurements
 - Both large and small business offerors must submit a participation plan
 - The participation plan is based on total contract value
- Large Business offerors **must** submit a Small Business Subcontracting Plan
 - Mandated by FAR 19.702
 - This is not a rated element as a part of the Source Selection process; however, the offeror shall submit an acceptable plan with the proposal
 - The subcontracting plan is based on total subcontracted dollars
 - Failure to comply in good faith is in material breach of the contract



SELFDRIDGE ANGB AERIAL VIEW

LEGEND

 Projects Location



PROJECT INFORMATION

Construct a 162,000 SF dual bay maintenance and fuel cell hangar facility utilizing conventional design and construction methods to accommodate the KC-46 mission of the facility. Facilities will be designed as permanent construction in accordance with the DoD Unified Facilities Criteria (UFC) 1-200-01, General Building Requirements and UFC 1-200-02, High Performance and Sustainable Building Requirements. The facility should be compatible with applicable DoD, Air Force, and base design standards including UFCs 3-260-01, 3-600-01 and 4-211-01, and ETL 02-15. In addition, local materials and construction techniques shall be used when cost effective. This project will comply with DoD antiterrorism/force protection requirements per unified facilities criteria. Buildings 14, 15, 24, 410, and 39 will be demolished as part of this project.

SCHEDULE / MILESTONES

Milestone	Approximate Date
Construction Contract Award	December 2027
Contractor Receives NTP	March 2028
Construction Completion Date	July 2030



KC46 Dual Bay Hangar Complex – Rendering





KC46 Dual Bay Hangar Complex – Airfield View



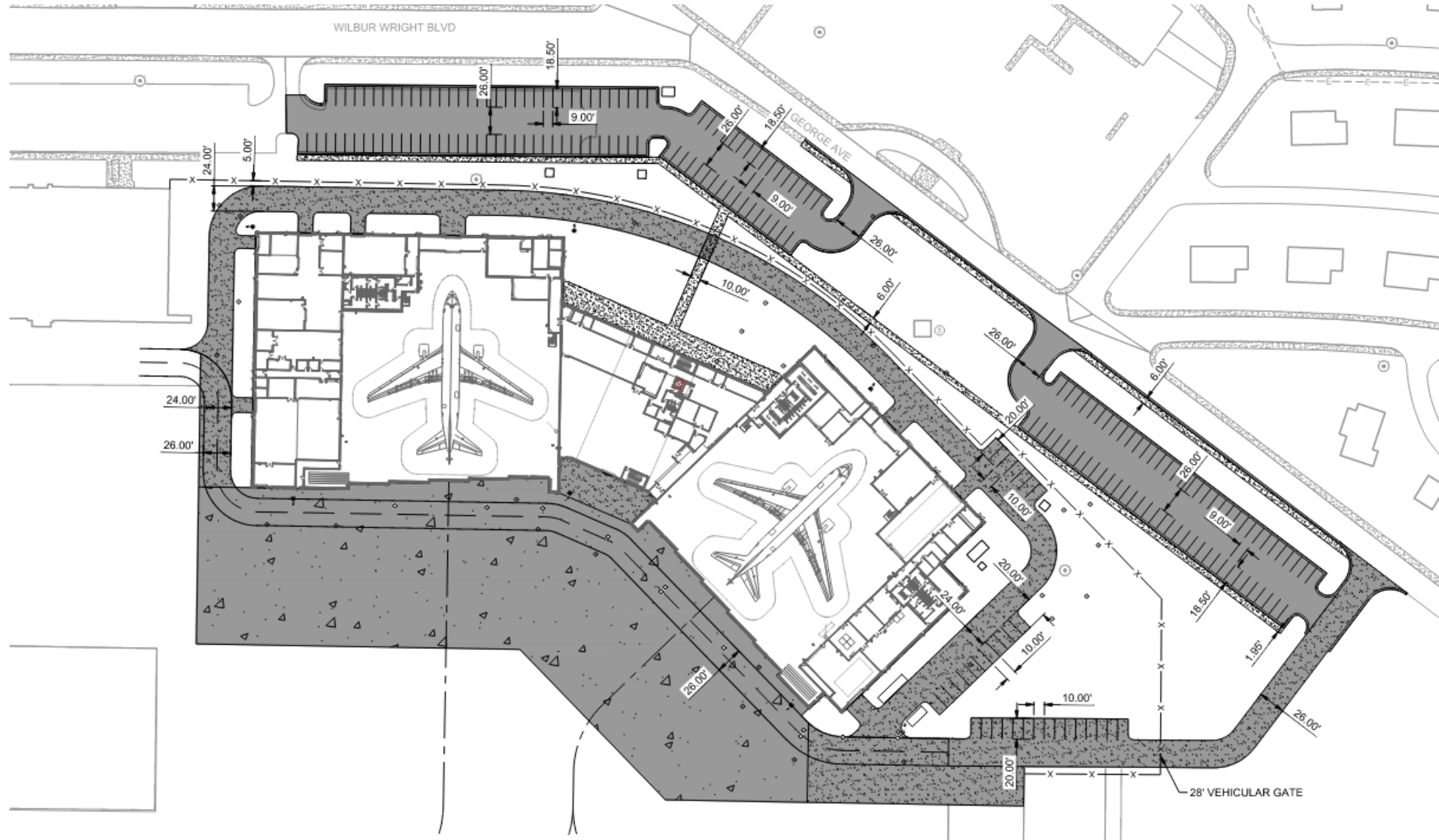


KC46 Dual Bay Hangar Complex – Entrance





KC46 Dual Bay Hangar Complex – Site Plan





LRL FUTURE PROJECTS

Alpena ANGB

CRTC Troop Training Quarters - **Estimated Cost Range is between \$25,000,000 and \$100,000,000**

Detroit Arsenal

CDC - FY28---- **Estimated Cost Range is between \$25,000,000 and \$100,000,000**

Stormwater Retention Basin - FY27---- **Estimated Cost Range is between \$5,000,000 and \$10,000,000**

Selfridge ANGB

Microgrid and Power Generation Project- FY29---- **Estimated Cost Range is between \$25,000,000 and \$100,000,000**

SUMMARY

- Register SAM.gov to obtain and respond to solicitations
- Project award will be made on a Best-Value-Trade-Off” basis as described in the solicitation
- Project Labor Agreements will be required for projects over \$25M
- As this is an unrestricted procurement, submitting Large Businesses must also provide a Small Business Subcontracting Plan as described in the solicitation
- New construction and renovation work expected over next several years.



U.S. ARMY



US Army Corps
of Engineers®



TAKE A BREAK





Josiah L. Meyers, PE

Design & Construction Division –

State Facilities Administration

**Department of Technology, Management
& Budget**

- meyersj11@michigan.gov
- (269) 213-6241

State Facilities Administration
Design & Construction Division



***Selfridge Air National Guard Base
Industry Day***

State of Michigan Contracting

27 April 2026

Agenda

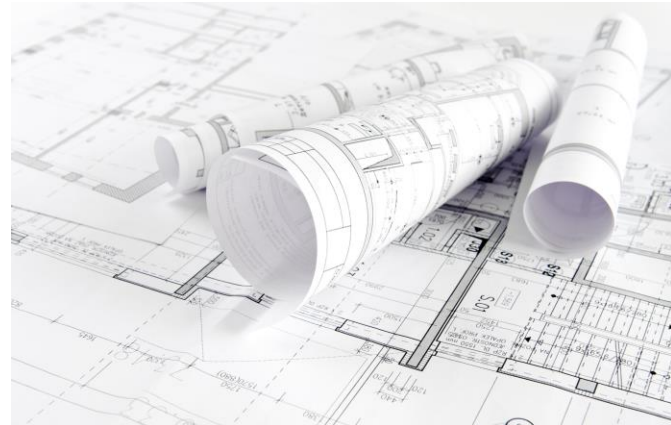
- ◆ Overview of Projects
- ◆ Construction Contract RFP Planning
- ◆ SOM Contracting Information (SIGMA VSS)
- ◆ Contact Info

DTMB Projects

- ◆ Runway Encroachment Solution
 - Rosso Hwy/Irwin Drain (Macomb County execution)
 - Runway Shift
 - Taxiway A Extension
 - Taxiway B Extension
 - Aircraft Arresting System

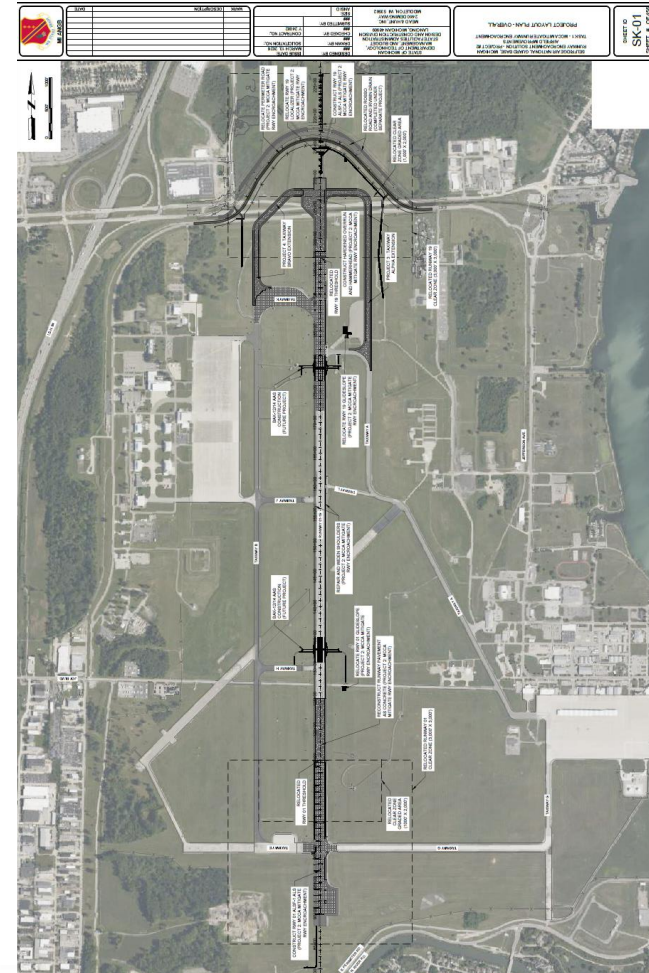
- ◆ KC-46 Aircrew Training Complex

- ◆ KC-46 Squadron Operations



Runway Encroachment Solution

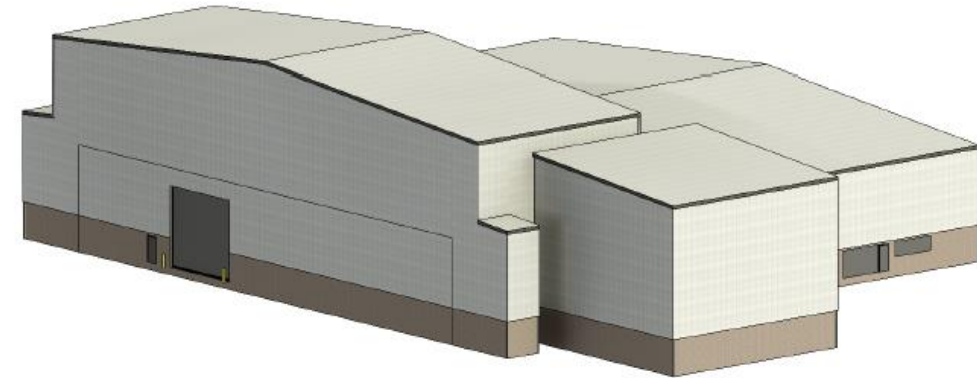
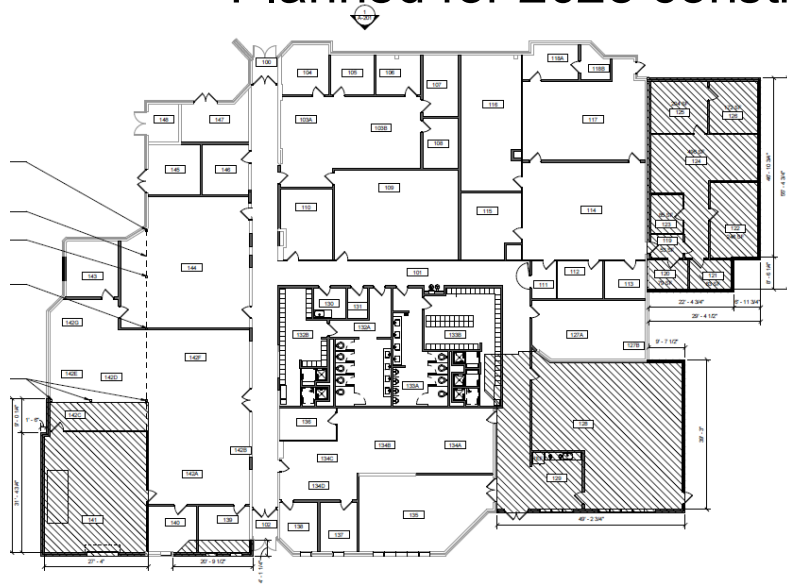
- ◆ Runway Encroachment Solution
 - Rosso Hwy/Irwin Drain
 - Design 100% complete
 - Macomb County execution
 - Runway
 - Design 95% complete
 - Taxiway A
 - Design 35% complete
 - Taxiway B
 - Design 35% complete
 - Aircraft Arresting System
 - Design 15% complete



KC-46 Projects

◆ KC-46 Aircrew Training Complex

- Renovation/addition of Hangar 35
- Total 20,700 SF
- 15% design complete
- Planned for 2028 construction



◆ KC-46 Squadron Operations

- Renovation/addition of Bldg 17
 - Total 35,000 SF
 - 15% design complete
- Planned for 2028 construction

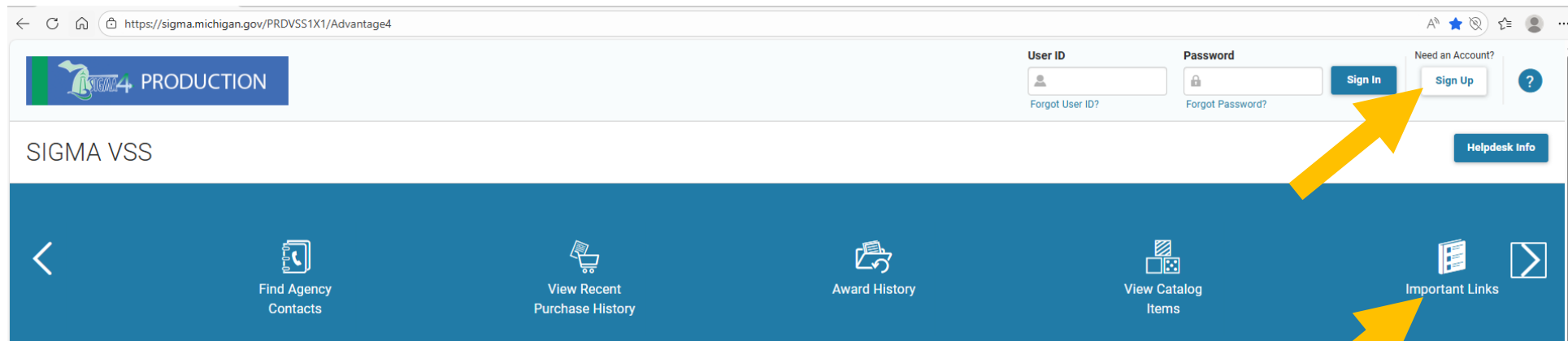
Construction Contracting

- ◆ Construction Manager Contracts
 - Runway Encroachment Solution (2026/2027)
 - KC-46 Aircrew Training Complex (2028)
 - KC-46 Squadron Operations (2028)
- ◆ 2-Step Process
 - Request for Qualifications (RFQ)
 - Request for Proposal (RFP)
- ◆ Solicitations posted on [SIGMA VSS](#)



SIGMA VSS

- ◆ All SOM solicitations are posted on SIGMA VSS
- ◆ RFQ/RFP responses submitted electronically
- ◆ Quick reference guides available
 - <https://www.michigan.gov/budget/budget-offices/sigma/>



Contact Info

- ◆ DTMB-DCD:
 - Project Director: Josiah Meyers, P.E.
 - meyersj11@michigan.gov
 - (269) 213-6241

 - <https://www.michigan.gov/budget/budget-offices/sigma/>



Scott Wanagat

Chief Highway Engineer

Macomb County Department of Roads

Macomb County's Transportation Infrastructure

Scott Wanagat, County Highway Engineer
Macomb County Department of Roads

April 2026



Strengthening our Transportation Network

THE MACOMB COUNTY DEPARTMENT OF ROADS IS RESPONSIBLE FOR THE MAINTENANCE AND MANAGEMENT OF MORE THAN:



**1,700 miles of
county roadways**



225 bridges



830 culverts



**900 traffic
signals**



**350 traffic
cameras**



**60,000 traffic
signs**



SERVING OUR COMMUNITY



Managing construction and maintenance of Macomb County roadways



Engineering and designing all road and bridge projects under the jurisdiction of Macomb County



Planning, developing, and implementing Macomb County road programs



Managing service requests for patching potholes, grading, ditching, dust control, and other road maintenance duties



Managing snow and ice removal operations



Providing real-time construction, lane closure, and traffic update information to road users



Oversight and inspecting all incoming requests for permits within the roads right of way



Providing permits for residential, commercial, and other construction within the roads right of way



Monitoring road conditions, real-time traffic flow, signal operations, and managing emergency responses to incidents on the roadways



ROAD JURISDICTIONS

State

- Roads with I, M or US: I-696, I-94, Hall Road (M-59), Gratiot Avenue (M-3), Groesbeck Highway (M-97), etc.

County

- Primary and local roads: Metropolitan Parkway, Mound Road, Romeo Plank Road, 10 Mile Road, 25 Mile Road, etc. (even numbered mile roads within cities)

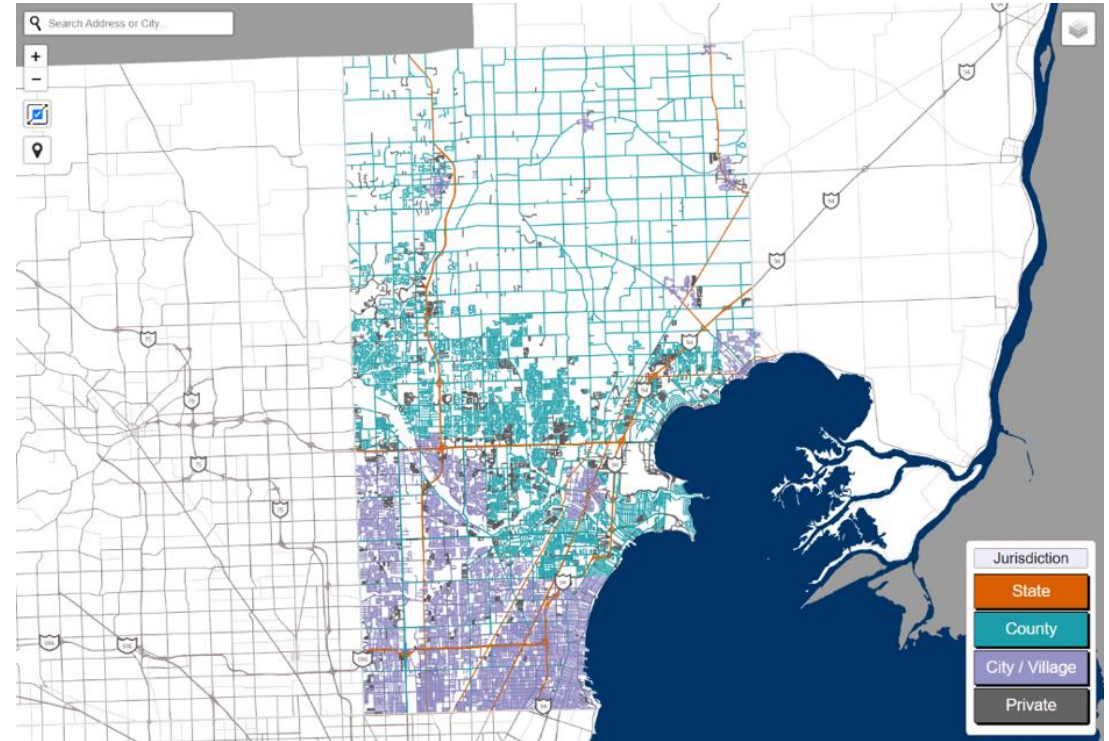
City and Village

- Some mile roads (odd numbered mile roads), some north and south roads (Hoover Road and Ryan Road) and all residential streets

Township

- All roads in townships are under Macomb County jurisdiction (except private roads and state trunklines)

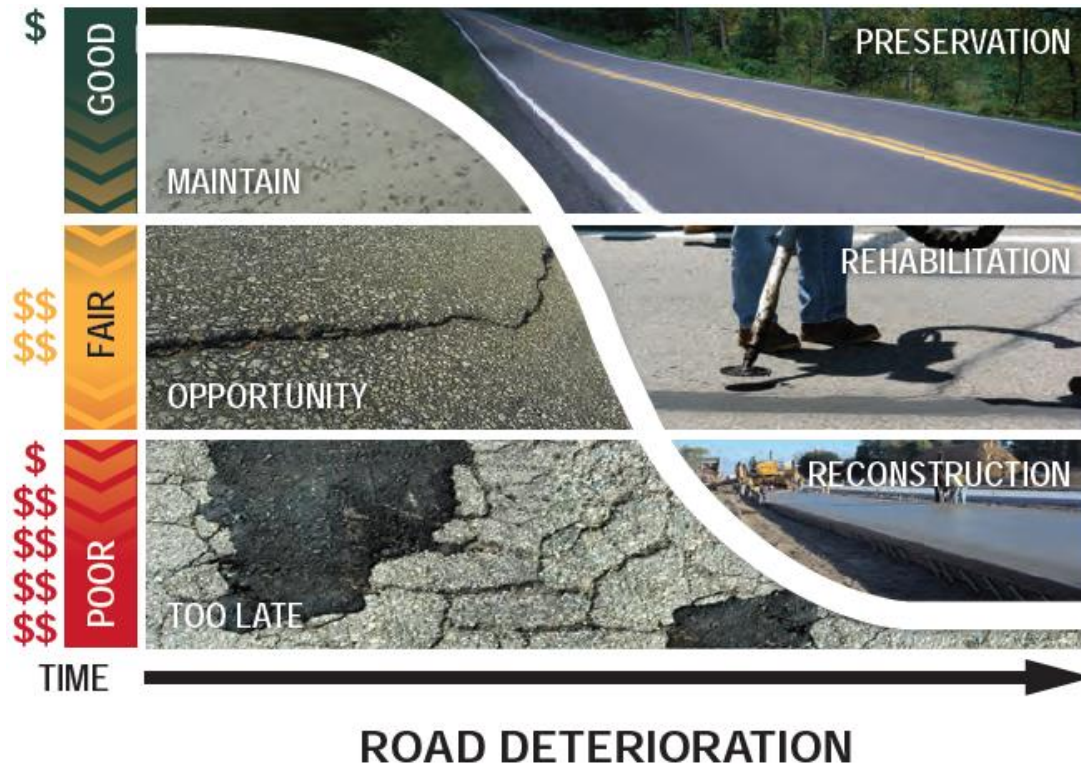
Cities and villages receive funding from the MTF for roads under their jurisdiction. Townships do not receive funding from the MTF.



maps.semco.org/roadjurisdiction



TRANSPORTATION ASSET MANAGEMENT



- MCDR takes a strategic approach to managing Macomb County's road, bridge and transportation network.
- Plan projects and allocate resources based on data, conditions and community needs.
- Use a mix of preventative maintenance, rehabilitation and reconstruction fixes best suited for each individual situation to improve Macomb County's road and bridge system.



Community outreach and road education

The strength of our infrastructure relies on the strength of our community partnerships. Through the Community Outreach and Road Education (CORE) program, MCDR works with all local municipalities within Macomb County to provide the public with a quality transportation system.

MCDR meets regularly with local community leaders to identify and prioritize transportation infrastructure improvement projects, including planning and budgeting for road, bridge, and traffic projects.

How are projects selected?

MCDR takes a comprehensive approach to managing Macomb County's road, bridge, and transportation network. The chart below outlines the process and steps for planning, budgeting for, and selecting road projects.



Need Identified →	Project Selection →	Budgeting/Planning →	Project Development →	Construction →	Project Completion
<ul style="list-style-type: none"> Community engagement Transportation asset management planning Pavement Surface Evaluation and Rating (PASER) data Stakeholder or public request 	<ul style="list-style-type: none"> Project feasibility determination Engineering and traffic studies (if applicable) Project application submittal by local community for eligible MCDR, state or federal programs 	<ul style="list-style-type: none"> Funding identification (local, county, state or federal) MCDR review of project application Macomb County Federal Aid Committee (if project is federal aid eligible) Cost share agreement between MCDR and local community 	<ul style="list-style-type: none"> Determine anticipated project timing, staging, and traffic management Preliminary engineering Design Environmental review and permitting (if applicable) Right of way acquisition (if necessary) Project advertising, bid letting and contractor selection 	<ul style="list-style-type: none"> Utility relocation coordination Construction Material testing Inspection 	<ul style="list-style-type: none"> Road or bridge open to traffic Restoration and punch list work



PROJECT PROCUREMENT

1. Assemble bid packages with plans, specifications and cost estimates.
 - Includes special provisions for construction, traffic plans, utility coordination clauses and progress schedules.
2. Projects are advertised to prospective bidders requesting packages for bid with a final due date.
3. Electronic bids are received and are available online.
 - Completed bids are posted once bidding had closed.
4. Contracts are drafted and sent to selected contractors for review, signature and project-specific insurance with MCDR and its agents named as additional insured.
5. Contracts are presented to the Macomb County Board of Commissioners. Once formally approved, contracts are awarded, and work begins.





PROJECT EXECUTION



1. Preconstruction meeting is held with MCDR, contractor and project stakeholders.
 - Determine schedule, detours and traffic, project phasing and other details.
2. Project information is emailed and mailed to local stakeholders, emergency services and municipalities.
 - Construction updates are provided via email newsletter, website and social media.
3. Traffic signs and devices are installed to establish lane closures and restrictions.
4. Contractor mobilizes equipment to the site.



PROJECT CONSTRUCTION

1. Work begins with any removal of signs, trees, pavement, etc.
2. Temporary paving (if necessary) is done to help facilitate traffic.
3. Underground drainage is constructed including storm sewer, manholes, catch basins, underdrain and culverts.
4. Backfilling with sand is done up to subbase. Aggregate subbase is placed, graded and compacted.
5. Paved surface is placed over the engineered base.
 - Concrete is finished and cured.
 - Asphalt is rolled to proper density.
6. Once paved surface is ready, traffic is switched to allow construction of the other lanes (if applicable).
7. Restoration work including gravel shouldering and turf establishment is completed prior to placement of final pavement markings.
8. Project is open to traffic.
9. Final punch list items are noted and miscellaneous work is completed.





PROJECT MANAGEMENT



MCDR has various roles and responsibilities to ensure successful project documentation and proper execution according to the project design, plans and specifications.

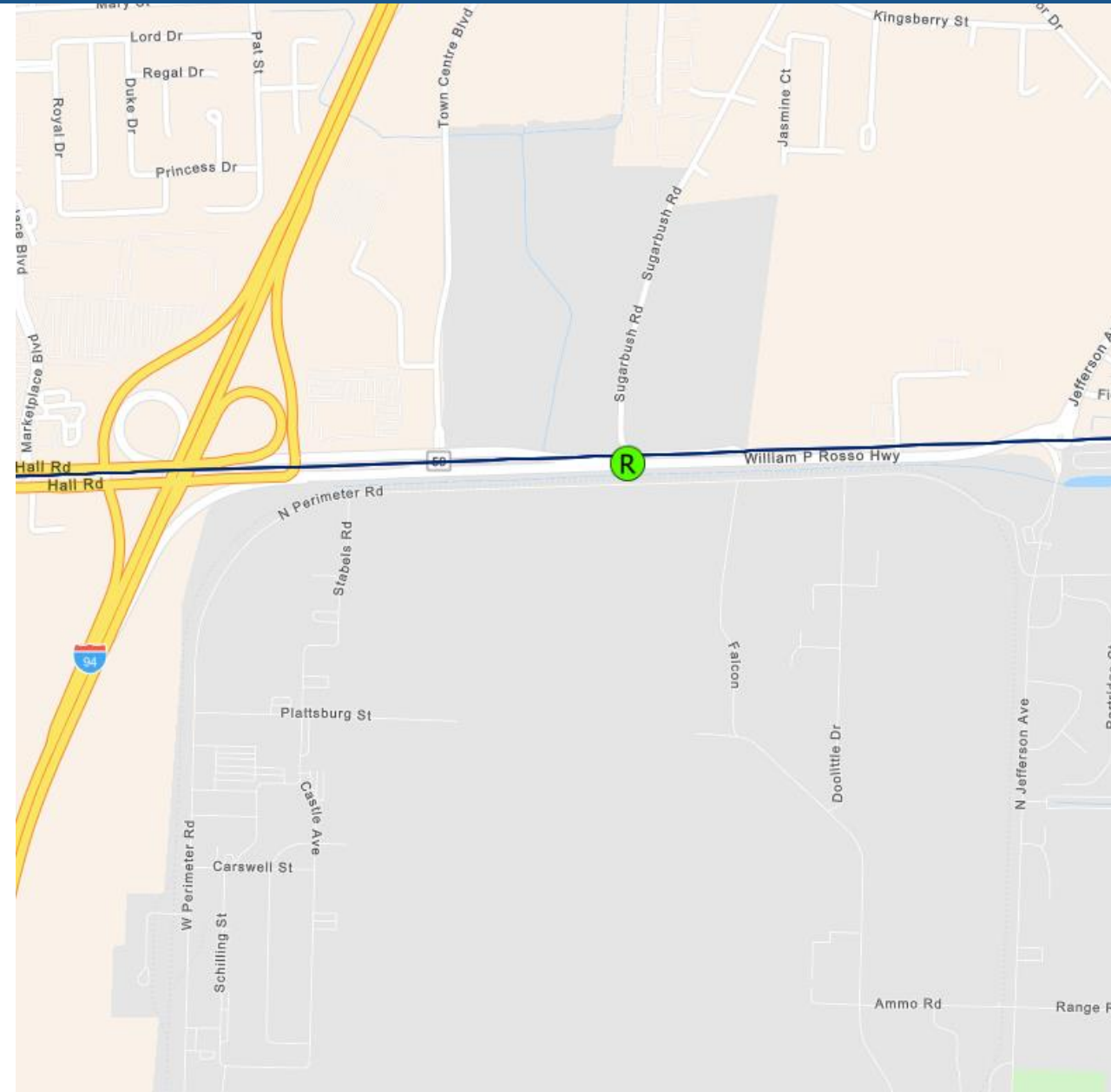
1. Survey crews
 - Establish road alignments, set control points and benchmarks
2. Inspectors
 - Ensure all contract work is done in accordance with project plans and specifications
3. Lab technicians
 - Review pavement designs and contractor quality control and assurance plans, conduct tests on material samples and perform strength tests on cured pavement
4. Office technicians
 - Maintain project files and documentation and ensure contractors provide all material source lists and certifications of any material used on the project
5. Engineers
 - Serve as the primary point of contact for project management with the contractor



WILLIAM P. ROSSO HIGHWAY OVERVIEW

Anticipated Project Stages

- Stage 1: Preloading and offline earthwork (August 2026 - March 2027)
- Stage 2: Towne Center Boulevard and drain work (April 2027 - June 2027)
- Stage 3: Completion of road and drain work (July 2027 - November 2027)
- Stage 4: Remove existing roadway (December 2027 - February 2028)
- Spring 2028: Complete restoration work and begin airfield work





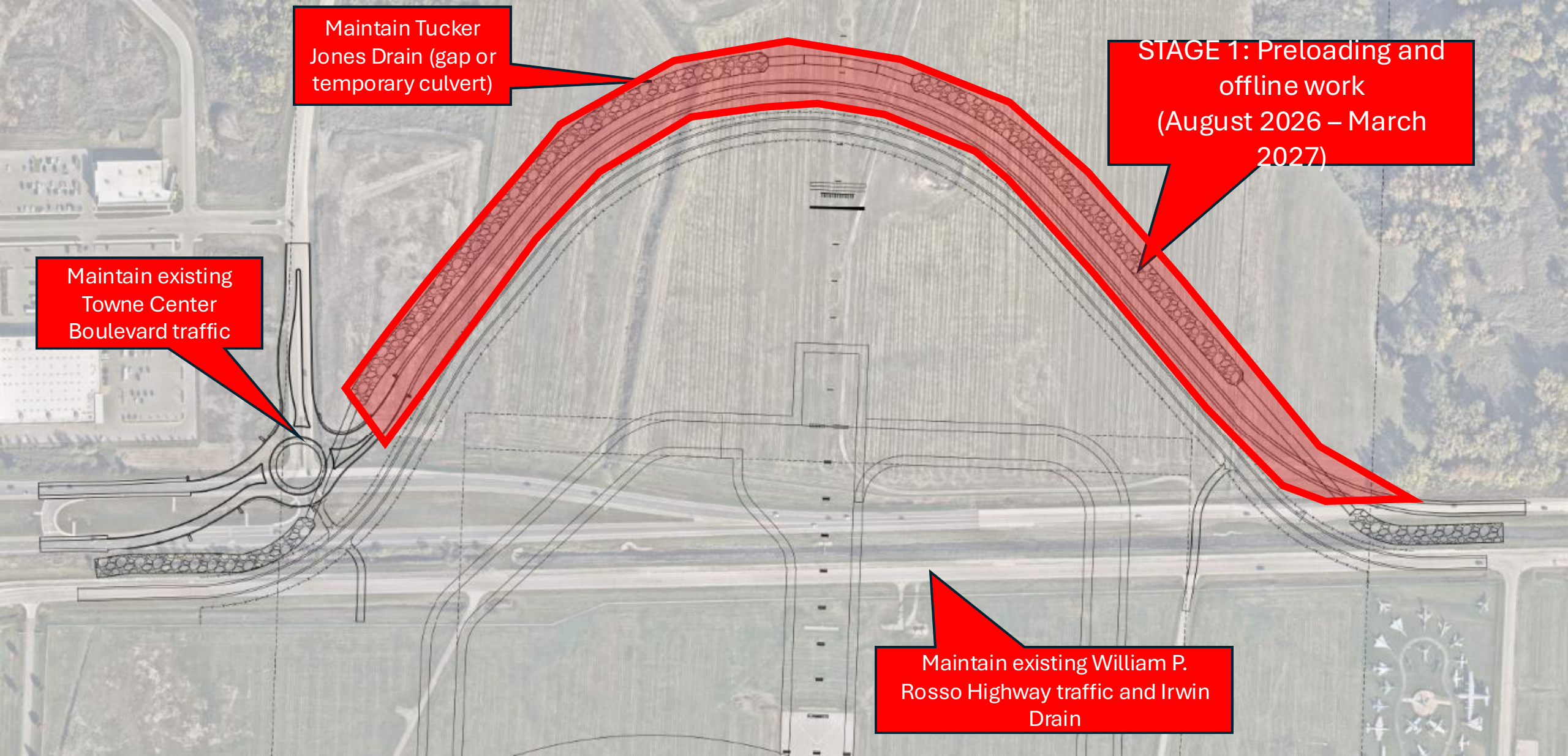
CONSTRUCTION STAGING – STAGE 1

Maintain Tucker Jones Drain (gap or temporary culvert)

STAGE 1: Preloading and offline work (August 2026 – March 2027)

Maintain existing Towne Center Boulevard traffic

Maintain existing William P. Rosso Highway traffic and Irwin Drain





CONSTRUCTION STAGING – STAGE 2

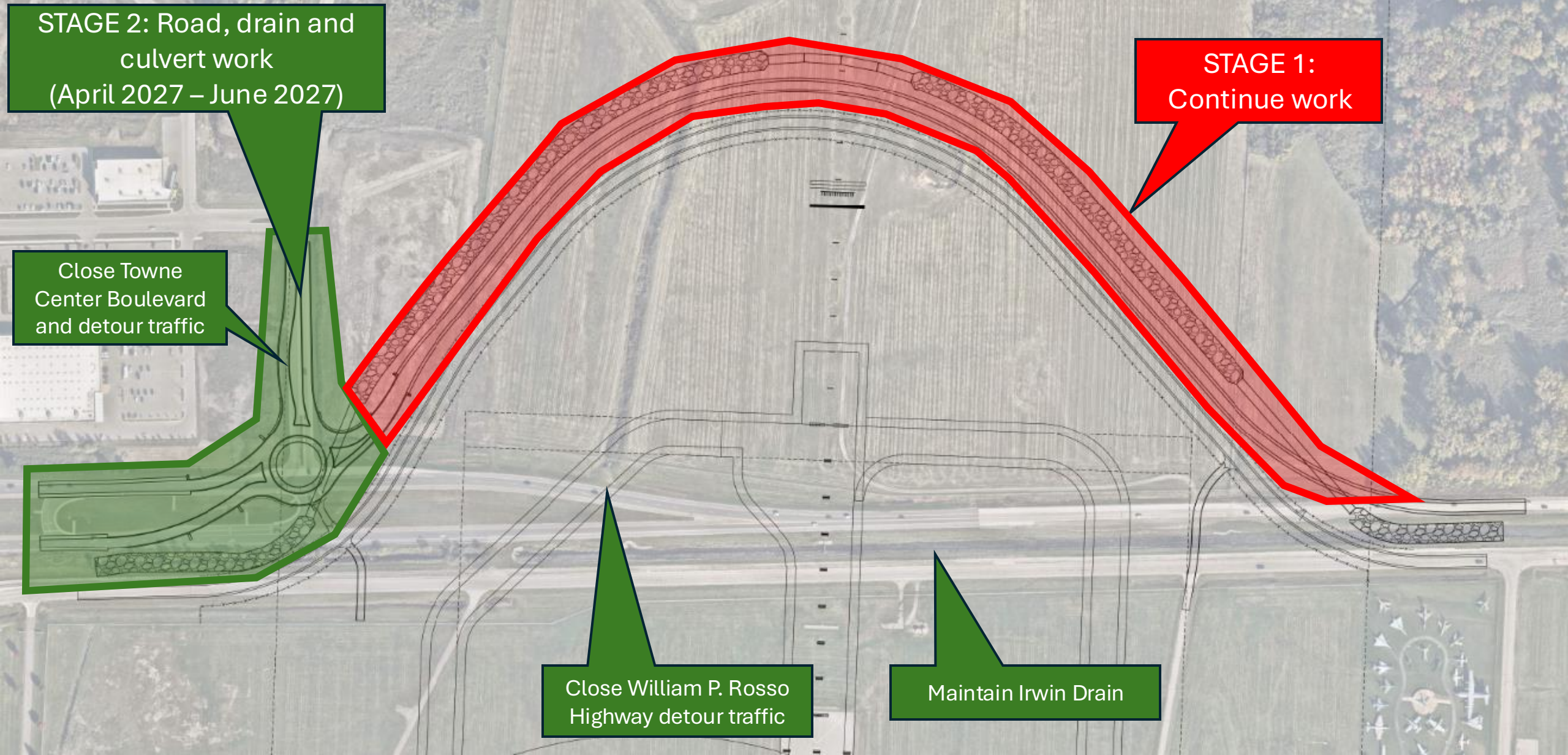
STAGE 2: Road, drain and culvert work
(April 2027 – June 2027)

Close Towne
Center Boulevard
and detour traffic

STAGE 1:
Continue work

Close William P. Rosso
Highway detour traffic

Maintain Irwin Drain





CONSTRUCTION STAGING – STAGE 3

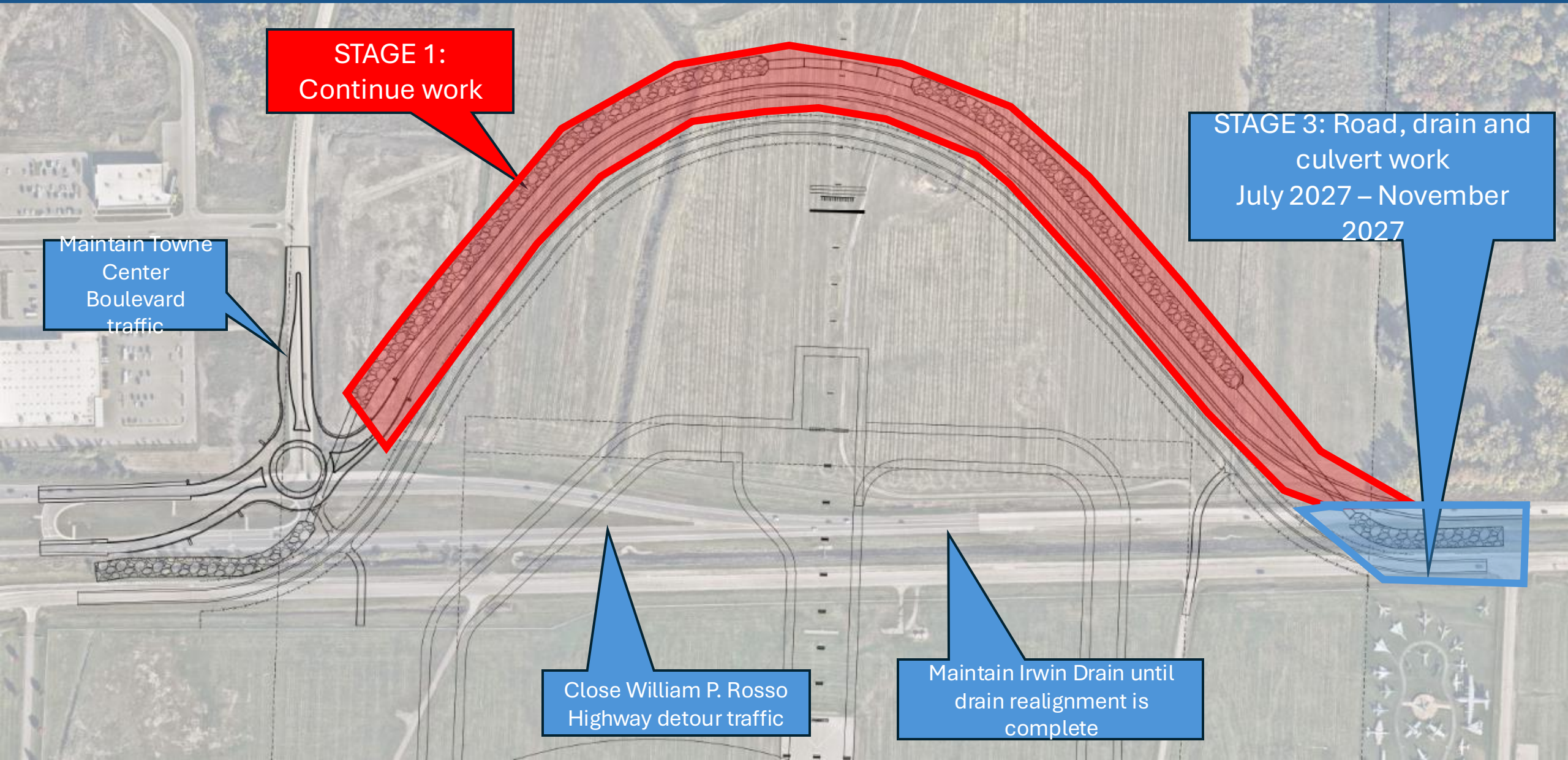
STAGE 1:
Continue work

STAGE 3: Road, drain and
culvert work
July 2027 – November
2027

Maintain Towne
Center
Boulevard
traffic

Close William P. Rosso
Highway detour traffic

Maintain Irwin Drain until
drain realignment is
complete





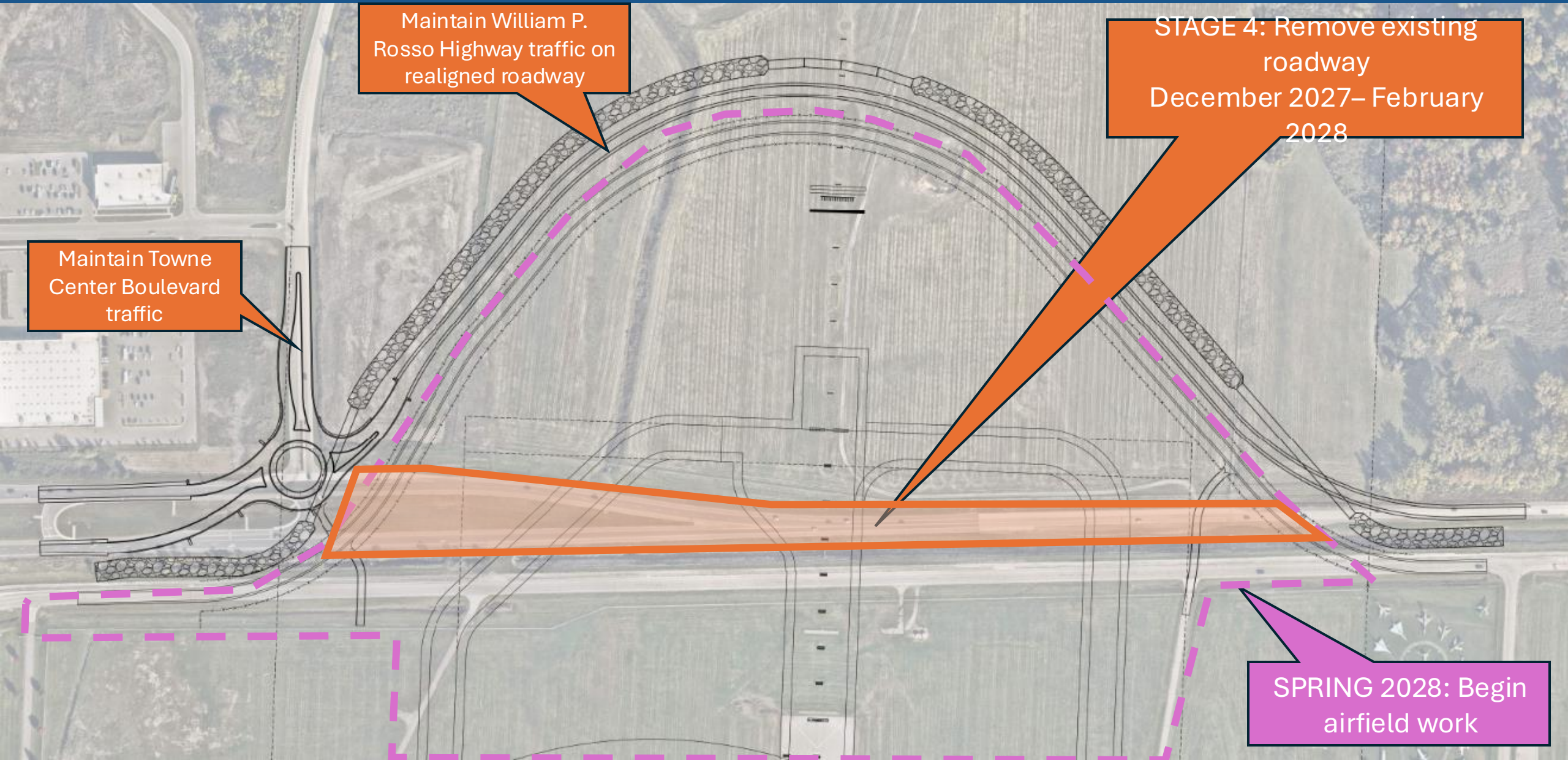
CONSTRUCTION STAGING – STAGE 4

Maintain William P. Rosso Highway traffic on realigned roadway

Maintain Towne Center Boulevard traffic

STAGE 4: Remove existing roadway
December 2027– February 2028

SPRING 2028: Begin airfield work





2026 WORK SUMMARY

- Investing more than **\$85 million** in Macomb County's transportation infrastructure network
- Improving **270** lane miles of primary and local roads
- More than **100** preventative maintenance, rehabilitation and construction projects
- Replacing and rehabilitating **3** bridges and large culvert structures
- Manage more than **7,700** maintenance and traffic service requests annually



PAVEMENT PRESERVATION PROGRAM: COUNTYWIDE

- **\$24 million** investment
- Asphalt resurfacing, concrete patching and crack sealing
- Notable projects include Mound Road between M-102 and I-696, Dequindre Road between M-102 and Maple Lane Avenue, Dequindre Road between 13 Mile Road and 14 Mile Road, Metropolitan Parkway between Mound Road and M-53, and 25 Mile Road between Dequindre Road and Mound Road



WORK ZONE AWARENESS AND SAFETY

Helpful Work Zone Driving Tips



Avoid Distractions



Move Over



Obey Road Crews & Signs



Plan Ahead



Slow Down



Watch For Sudden Stoppages



MACOMB WORK ZONE

To help Macomb County motorists and road users navigate local construction work, the **Macomb Work Zone** is built to keep the public informed and up to date of what's happening on our roadways.

- Dedicated web page with project information
- Email distributed weekly to subscribers with project information, department news and community resources
- Real-time text updates distributed to subscribers with lane closure and construction information
- Interactive project map

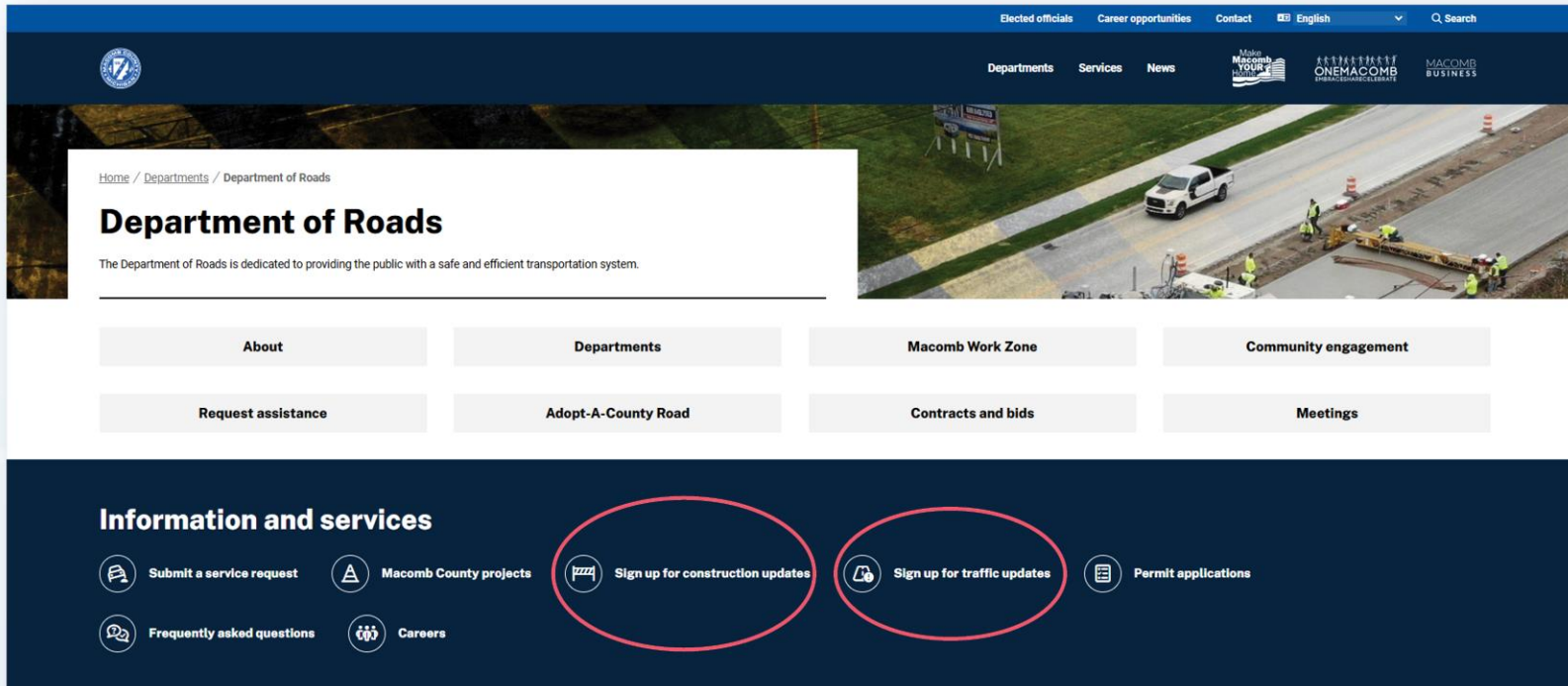


macombgov.org/macombworkzone

Sign up! **STAY INFORMED**



Department of Roads



GET IN TOUCH:

- ▶ 586-463-8671
- ▶ geninfo@rcmcweb.org
- ▶ macombgov.org/roads

CONNECT WITH US:



@MacombRoads



For the latest traffic and construction updates
macombgov.org/macombworkzone

117 South Groesbeck Highway
Mount Clemens, MI 48043



Jeff Bednar, PE

Civil & Environmental Resources Manager
Macomb County Public Works

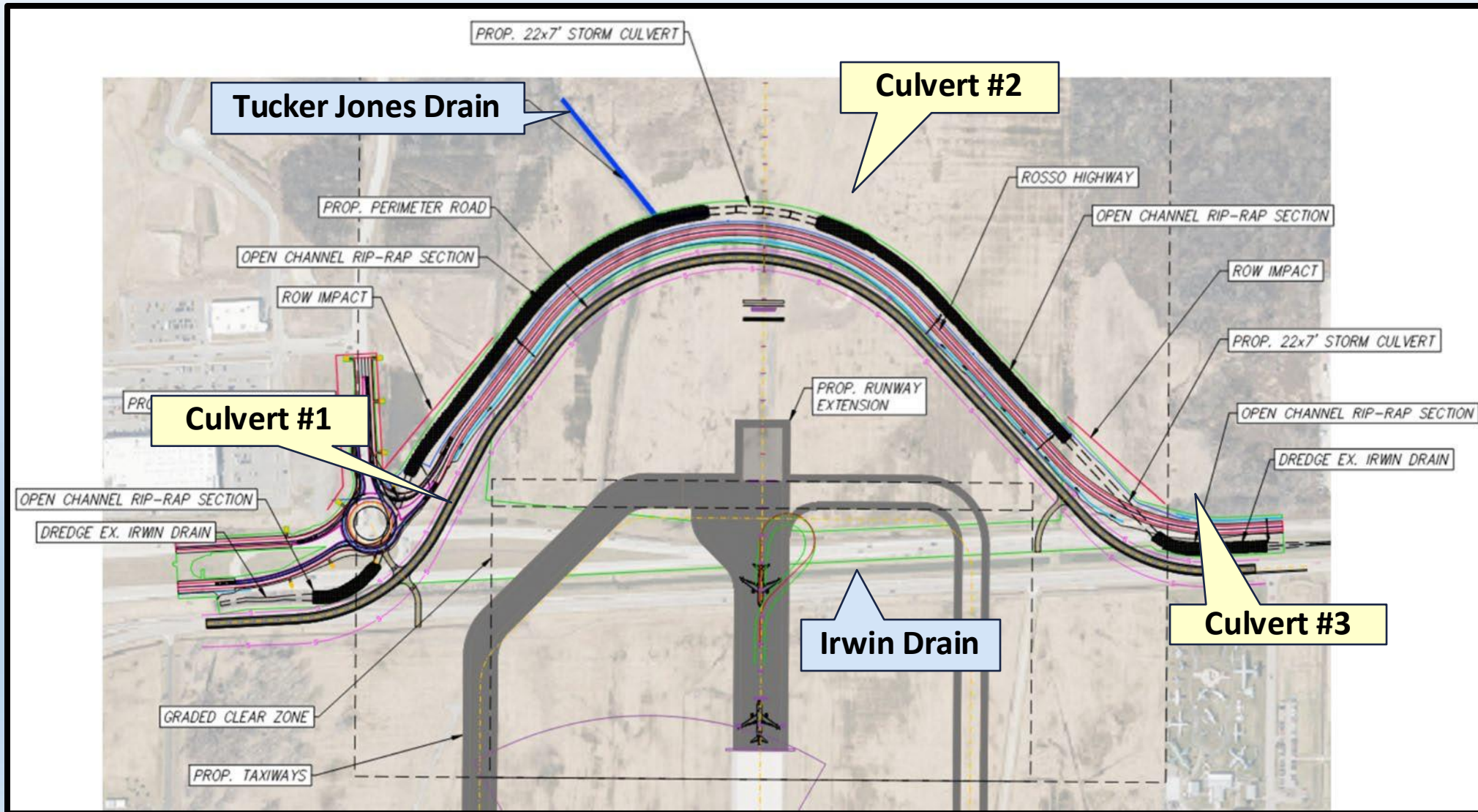
CANDICE S. MILLER

Macomb County Public Works Commissioner



Selfridge Airfield / Irwin Relocation Project
Presented by: Jeff Bednar, PE

Overview: Irwin Relocation



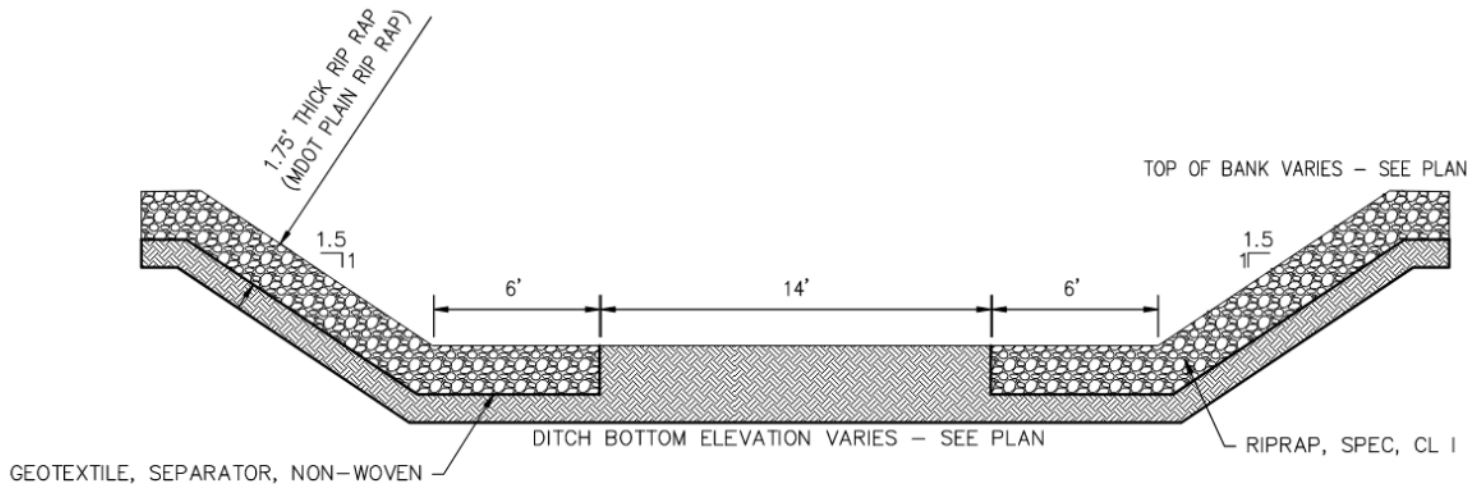
- 2 County Drains
- ~4,400 ft of stream relocation
- 3 new box culverts in relocation
- 1 new box culvert at Jefferson Ave.
- Utility relocations
- Non-Hazardous fill on site
- Highway closures
- Detailed staging plan

Overview: Jefferson Culvert



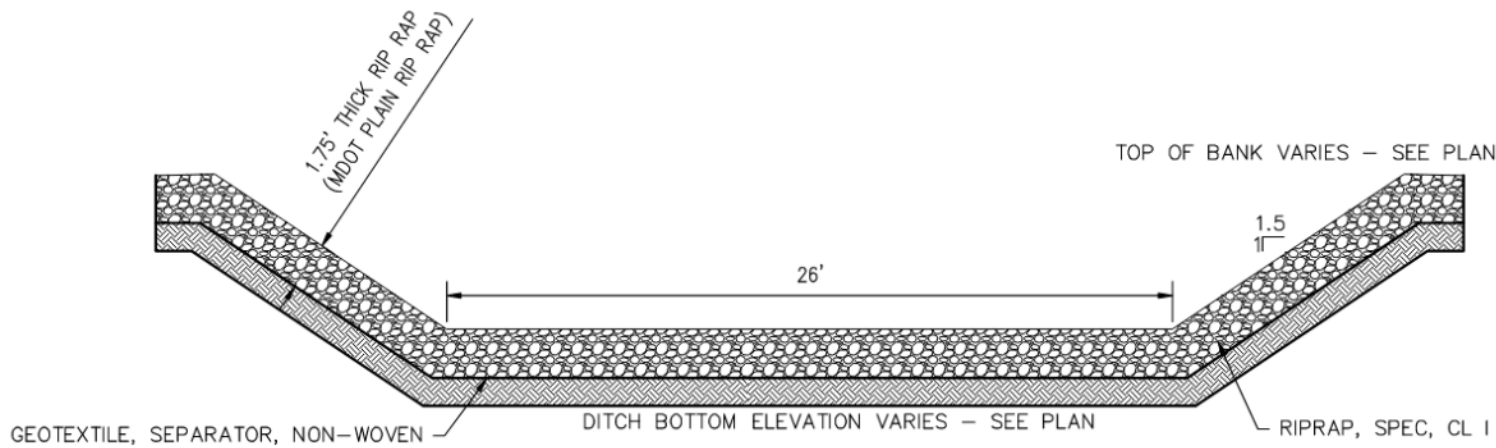
- Existing dual 72" CMPs
- Replace with 22' x 7' concrete box culvert
- Channel clean out between relocation and Jefferson culvert.
- Primary entrance to Selfridge

Typicals



TYPICAL CROSS-SECTION - OPEN CHANNEL

SCALE: 1"=10'

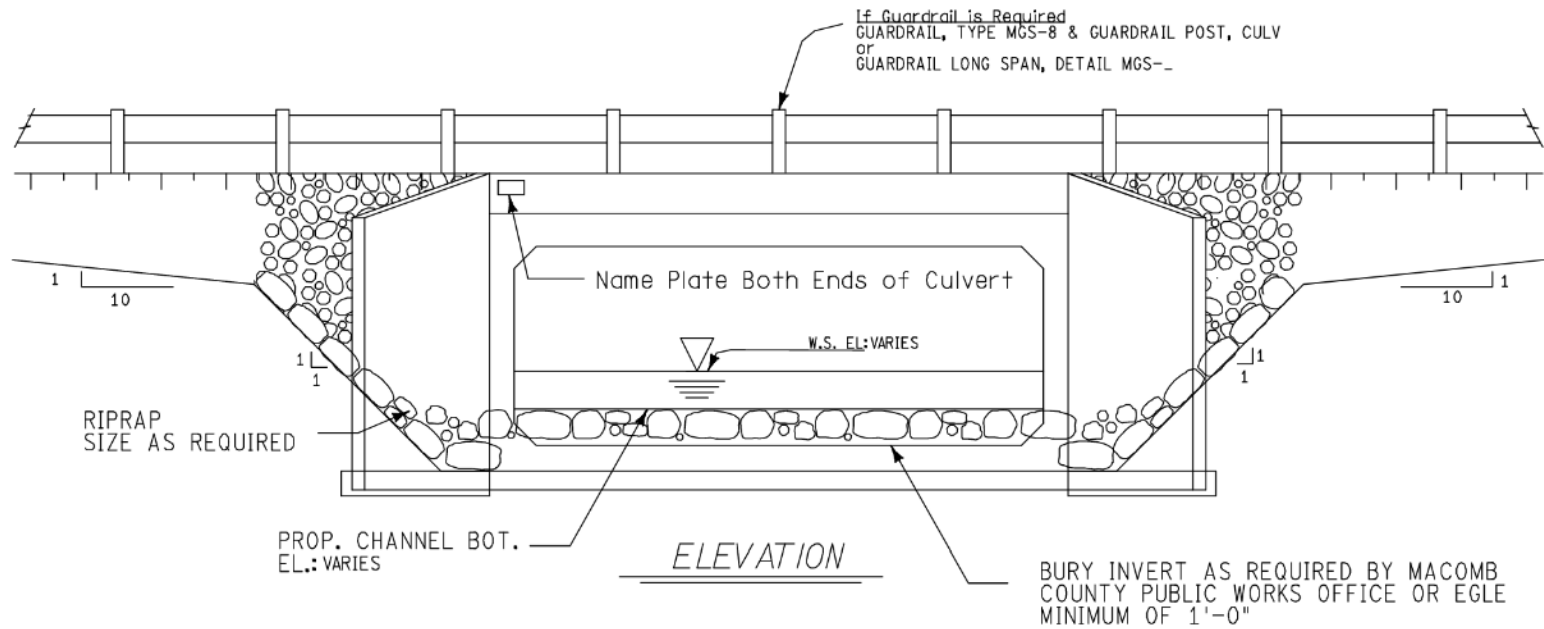


TYPICAL CROSS-SECTION - CULVERT END SECTION TREATMENT

SCALE: 1"=10'

- Riprap both banks
9" diameter average riprap
- Bank heights generally
range 10 to 5 feet tall
- Channel center remains
natural
- Riprap throughout entire
relocation
- Riprap in bottom of culverts
and wingwalls

Culverts

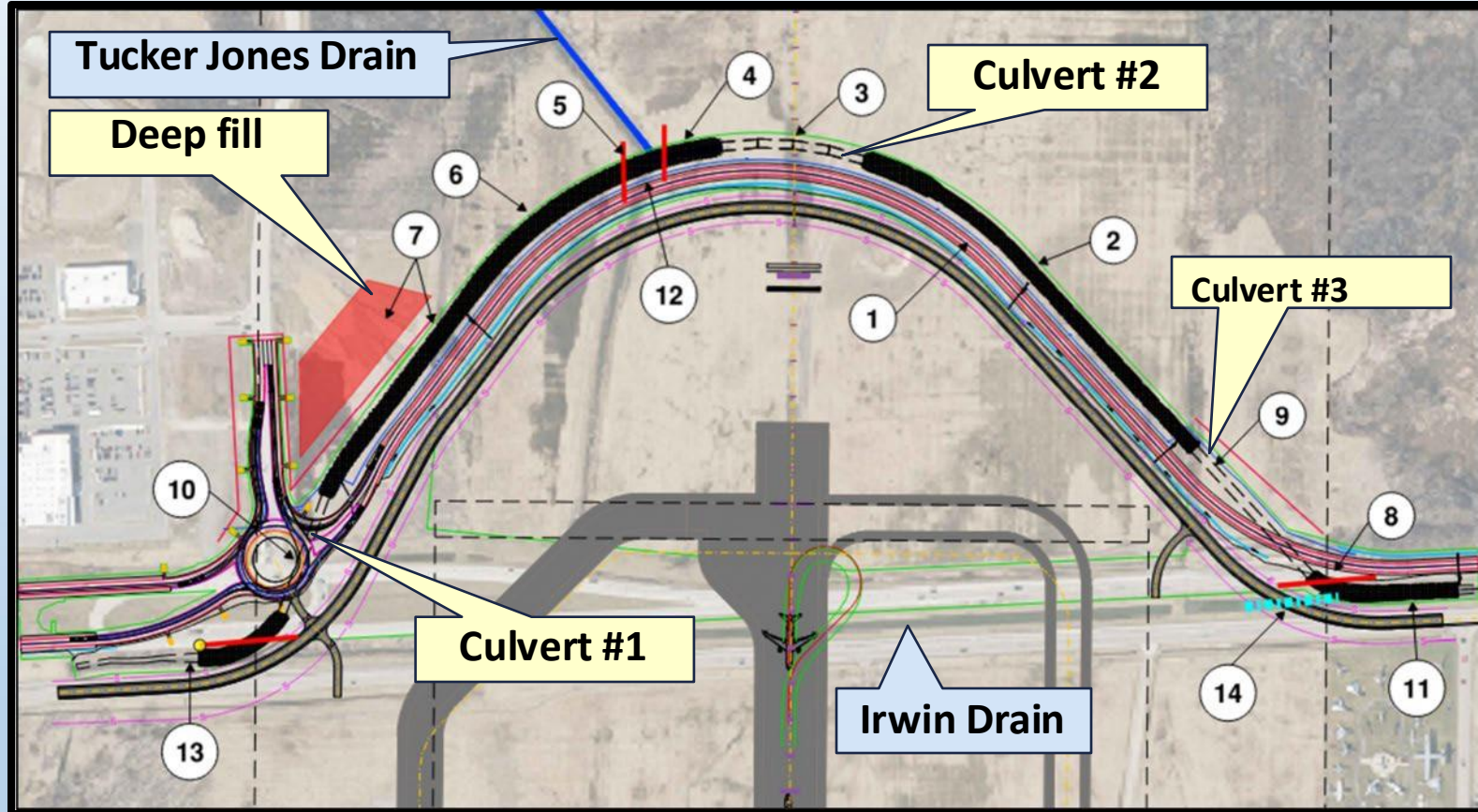


- 4 Conc. Box Culverts
- Culvert #2 has a shorter alternate
- All culverts with wingwalls and riprap

BOX CULVERT DIMENSIONS

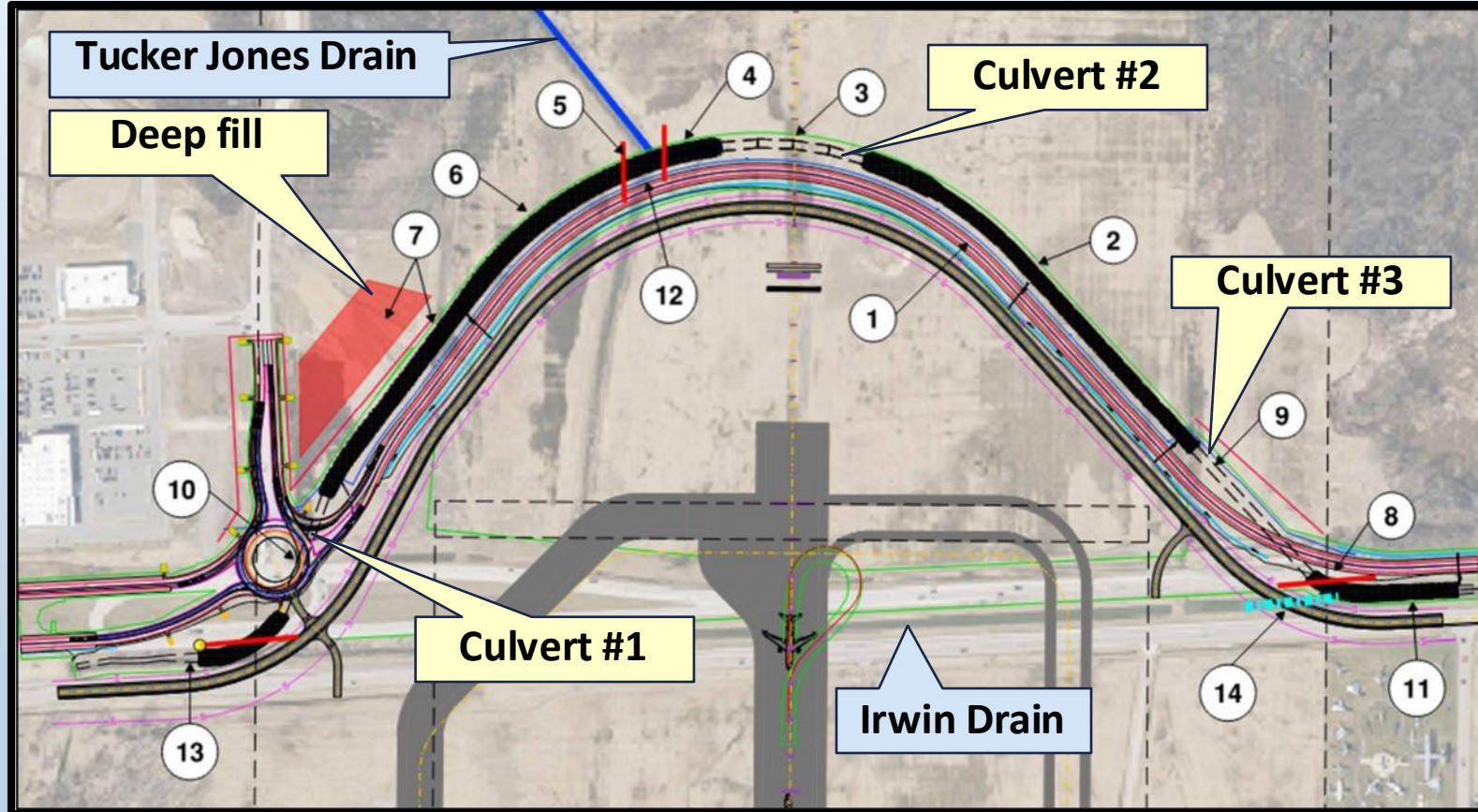
CULVERT NO.	HEIGHT (FT)	WIDTH (FT)	LENGTH (FT)
1	7	20	351
2A	7	22	60
2B	7	22	400
3	7	22	481
4	7	22	142

Staging



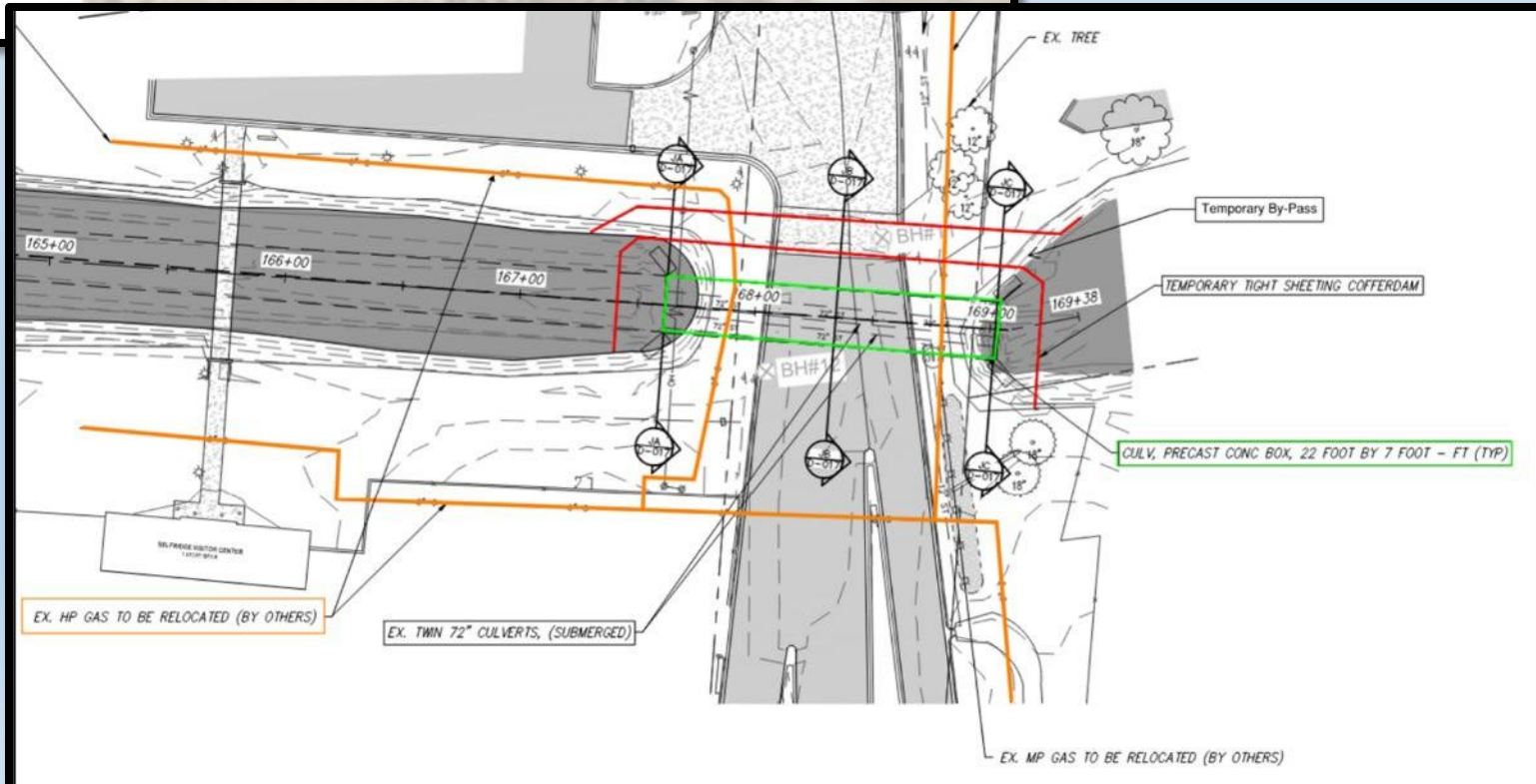
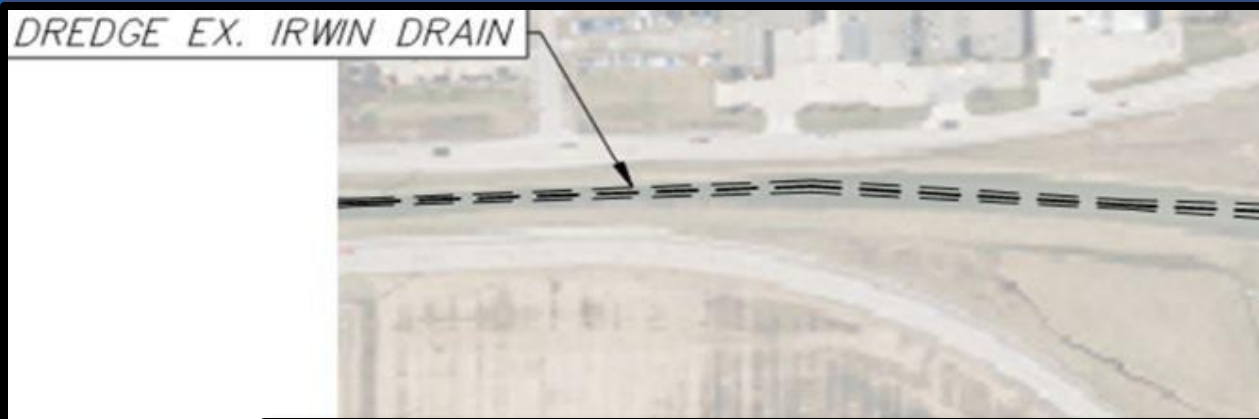
1. Preload roadway
2. Cut from culvert #2 to #3
3. Install Culvert #2
4. Cut from Culvert #2 to east of Tucker Jones (do not breach)
5. Cut west of Tucker Jones to deep fill section (do not breach)
6. Cut from deep fill section to Culvert #1
7. Remove deep fill embankment
8. Cut downstream of Culvert #3 and Install SESC pumping to Irwin (do not breach Irwin)

Staging Continued



9. Install Culvert #3 (Hwy Closed)
10. Install Culvert #1 (Hwy Closed)
11. Riprap existing Irwin downstream of Culvert #3 then connect (Hwy Closed)
12. Tie in Tucker Jones to new Irwin & block existing Tucker Jones
13. Cut upstream new Irwin tie-in and block existing Irwin
14. Install temp. culvert under proposed perimeter road. Block downstream end of legacy Irwin Drain.
15. Legacy Irwin and Tucker Jones will provide temp. drainage for new runway project.

Jefferson Culvert



1. Relocate Existing Gas Lines
2. Temporary sheeting cofferdams to bypass flows
3. Install 22' X 7' Box Culvert
4. Remove Sheeting
5. Riprap
6. Dredge existing Irwin

Utility Crossings and Taps (non comprehensive)



- 5 new storm water taps to Irwin Drain (18" to 24")
- 16" water main downstream of Culvert #1
- Unknown pipe between culvert #1 and #2 (possible abandoned storm)
- Electrical and telecom. at culvert #2
- 16" water main upstream of culvert #3
- Gas & Water main under culvert #3
- Gas and Telephone downstream of Culvert #3
- Gas, Electric, and overhead lines near Jefferson Ave.



Maureen Miller

Senior Procurement Specialist
Macomb Regional APEX Accelerator

APEX Accelerators: Empowering Business in Government Contracting

Maureen Miller
Senior Procurement Specialist
Macomb Regional APEX Accelerator

April 27, 2026



Agenda

- Understanding the APEX Accelerator's mission and its value to industry.
- Core services supporting firms seeking to work with the government.
- Connecting with the APEX Accelerator that serves your community.

★ **Understanding
the APEX
Mission and
Its Value to
Industry**

Authorized by Congress in 1985

- **Purpose**
To expand the number of businesses capable of competing for government contracts and to strengthen the nation's industrial base.
- **Department of War (DoW), Office of Small Business Programs (OSBP) Leadership FY22**
Beginning in FY 2022, the DoW OSBP assumed management and operations of the program from the Defense Logistics Agency (DLA) and changed the name from Procurement Technical Assistance Centers (PTAC) to APEX Accelerators.

★ Understanding the APEX Mission and Its Value to Industry

Funding

- APEX Accelerators are funded through a Cooperative Agreement from the DoW that requires a state match.
- MI APEX Accelerators receive their state match from the Michigan Economic Development Corporation (MEDC), Office of Defense and Aerospace Innovation (ODAI).



★ **Understanding
the APEX
Mission and
Its Value to
Industry**

Program Goals

- Cultivate and Sustain the Defense Industrial Base (DIB) & the Government Industrial Base (GIB).
- Increase the number of Small Business certifications and participation.
- Increase awareness of compliance with Foreign Ownership, Control, or Influence (FOCI).
- Improve Cybersecurity of the DIB and GIB; Strengthen the Supply Chain.
- Facilitate Innovation for the DIB and GIB.
- Capture Market Data in Key Industries.



Michigan APEX Accelerators

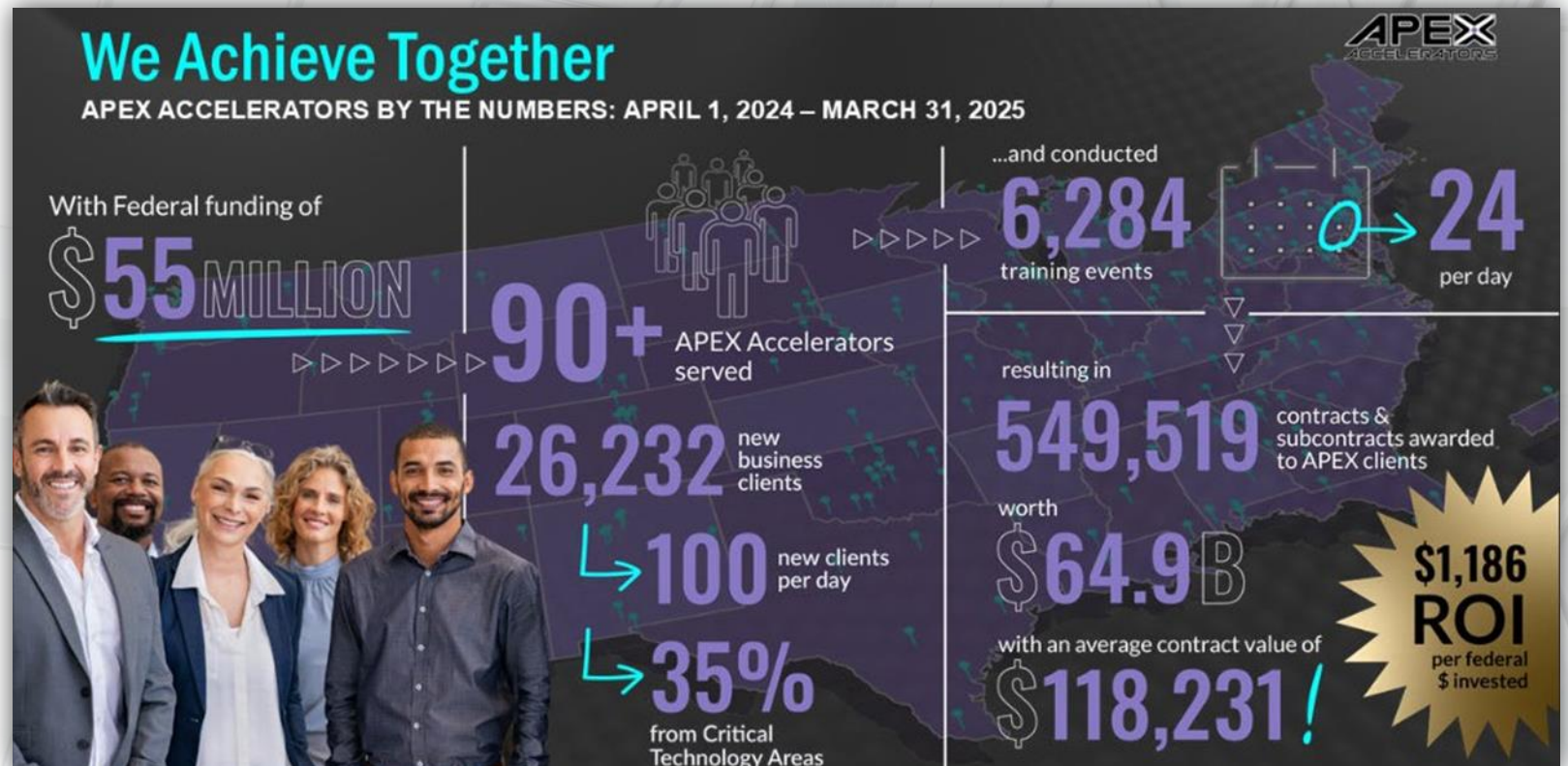
FY24 Impact Results

★ Understanding
the APEX
Mission and
Its Value to
Industry



National APEX Accelerators FY24 Impact Results

★ Understanding
the APEX
Mission and
Its Value to
Industry





Core Services Supporting Firms Seeking to Work with the Government

Our CORE Services



NO COST GUIDANCE

Providing contract support, registration assistance, suitability assessments and more at no cost to you!



SUITABILITY ASSESSMENT

Evaluating readiness for government opportunities and positioning your company for success. (DIB / GIB Client Readiness)



REGISTRATION AND SMALL BUSINESS CERTIFICATION ASSISTANCE

Assistance and support with completing government registrations and small business certification applications.



MARKET RESEARCH

Guidance in analyzing procurement data to identify government agencies and prime contractors with a demonstrated demand for your product or service.



BID OPPORTUNITY IDENTIFICATION (BIDMATCH SERVICE)

Daily notifications of government contracting opportunities aligned with your company's capabilities.



NETWORKING OPPORTUNITIES

Providing opportunities to connect with buying officers, prime contractors, and fellow businesses.

Macomb Regional APEX Accelerator 2026 Trainings and Events



Core Services
Supporting
Firms Seeking
to Work
with the
Government

CORE TRAINING

Led by our Procurement Specialists and available on-campus, online, in a Hyflex format, or through individualized one-on-one sessions upon request.

TAKE-AWAY TUESDAY TRAINING

Facilitated by a member of our team and presented online by subject matter experts.

SPECIAL EVENTS AND TRAINING

Collaborative events and trainings delivered in partnership with government agencies, resource partners, and professional associations such as MI NDIA. These sessions are typically held on-campus but may also be offered online.

ADDITIONAL TRAINING

Individual training sessions are available by request and may be delivered on-campus or online. Our specialists provide customized instruction on topics such as Bidding on Government Construction Projects, Davis-Bacon Act, GSA, WAWF, SBIR/STTR, Disaster Response, and many others to meet your specific needs.

CORE TRAINING

Introduction to Federal Government Contracting 101	
Federal Market Research 201	
Prospecting for Federal Opportunities 301	
How to Market Your Business to the Federal Government 401.....	
State Contracting Overview	
DLA Internet Bid Board System (DIBBS) Training 101	
DLA Internet Bid Board System (DIBBS) Training 201	
CMMC Level 1 Self-Certification Workshop.....	
Other Transaction Authority (OTA) Overview.....	

TAKE-AWAY TUESDAY TRAINING

DoD Mentor-Protégé Program Overview	
SBA Mentor-Protégé Program Overview	
Project Spectrum	
Navy Other Transaction Authority	
Foreign Ownership, Control or Influence (FOCI) Overview	
Contract Termination	
GSA Overview	
Defense Production Act (DPA) Title III	
Joint Certification Program (JCP).....	

SPECIAL EVENTS AND TRAINING

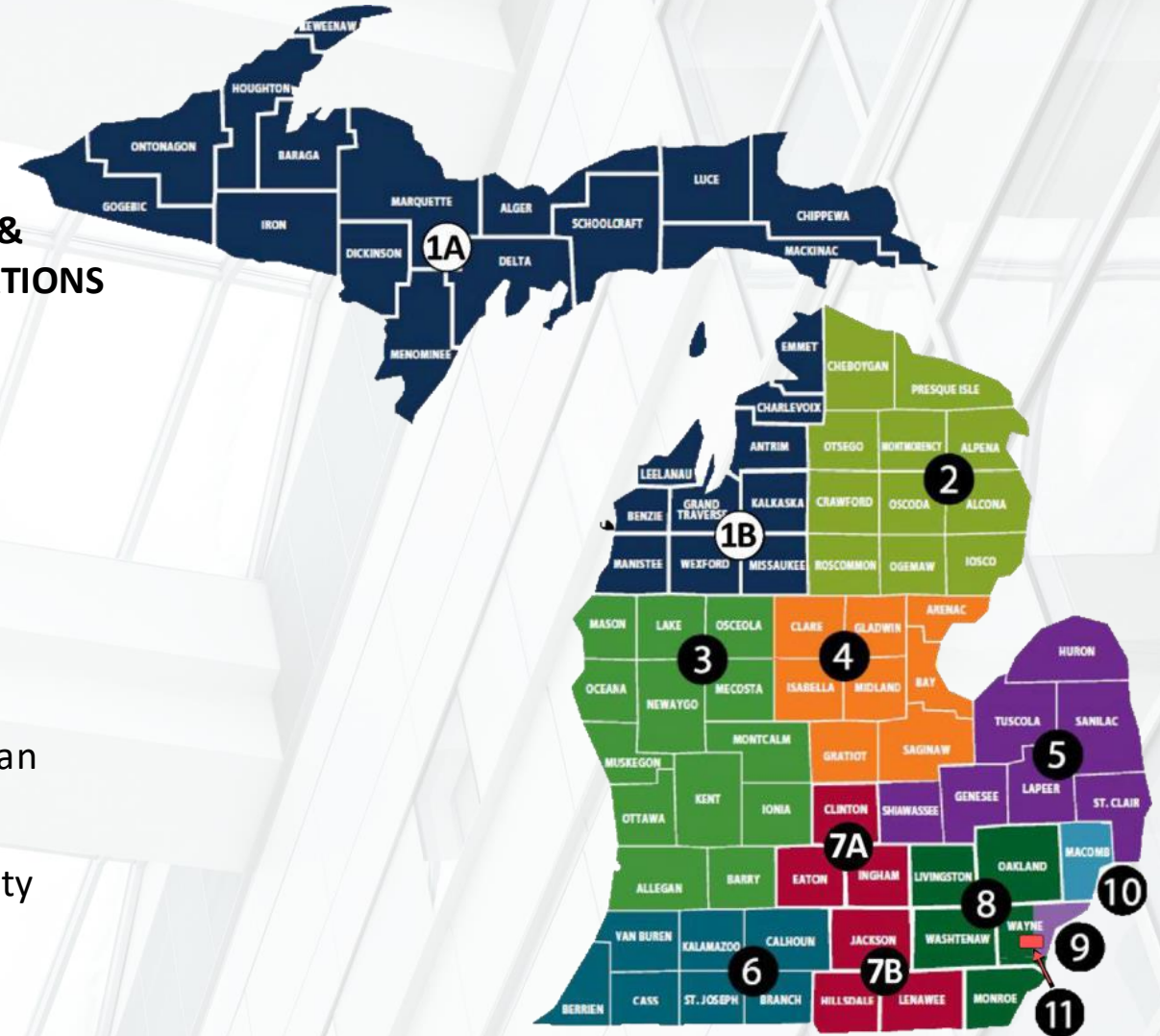
NDIA Michigan Chapter MDEX	
MDEX Training Course: APEX Accelerators Basics on Doing Business with Defense	
Ground Vehicle Acquisition Summit	
Ground Vehicle Systems Engineering & Technology Symposium (GVSETS).....	

Michigan APEX Accelerators

 Connecting with the APEX Accelerator that Serves Your Community

8 REGIONAL PROGRAMS & 3 SUBCENTERS = 11 LOCATIONS

1. Networks Northwest
2. Northeast Michigan
3. West Michigan
4. Saginaw Future
5. East Michigan
6. Southwest Michigan
7. South Central Michigan
8. Schoolcraft College
9. Wayne State University
10. Macomb Regional
11. MoveAmerica

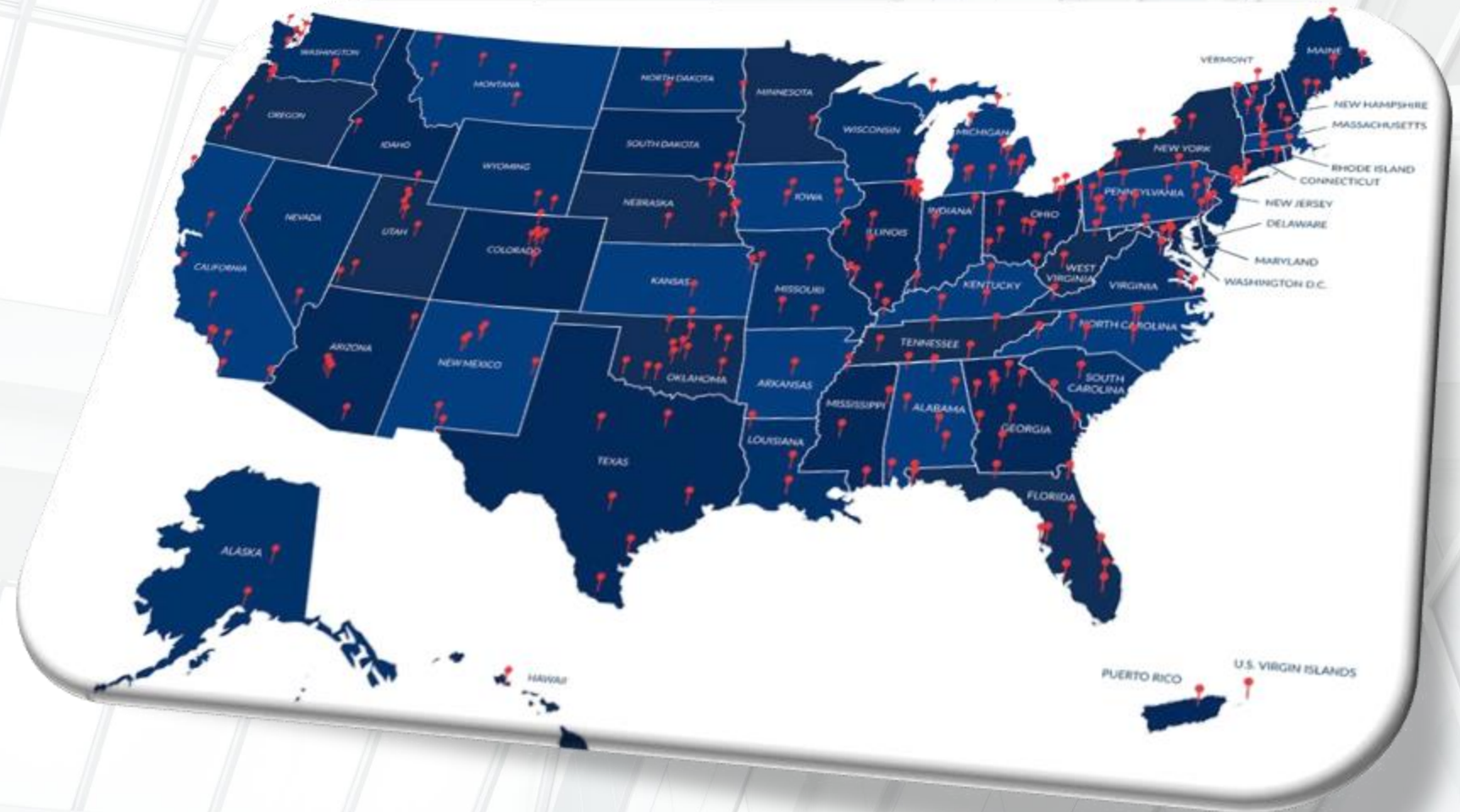


Over 90+ Centers Serving Businesses Across the United States



**Connecting
with the
APEX Accelerator
that Serves
Your Community**

Nationwide network of 650+ procurement professionals that help local businesses compete successfully in the government marketplace.



Locate Your APEX Accelerator

 Connecting
with the
APEX Accelerator
that Serves
Your Community



Businesses located IN Michigan



Businesses located OUTSIDE of Michigan

Is Your Business Located in Macomb County?

Contact us!

586-498-4122

www.macomb.edu/apex

apex@macomb.edu



2026 Training and Event Schedule



 **Connecting
with the
APEX Accelerator
that Serves
Your Community**

Questions?





Brigadier General Daniel Kramer

Assistant Adjutant General
Michigan Air National Guard



Thank You!

This event is brought to you in partnership with:

- Selfridge Air National Guard Base
- Selfridge Base Community Council
- Macomb County Chamber of Commerce
- Macomb County Planning and Economic Development
- Macomb Regional APEX Accelerator
- Office of Defense & Aerospace Innovation



Selfridge Industry Day Series

Meeting #2

SUMMER 2026

Questions?

SelfridgeMissionNext.com

Or

Info@SelfridgeMissionNext.com